



LDF Implementation Plan and Local Investment Plan

Ludlow Place & surrounding area Place Plan

2012/2013

CONTENTS

1. Introduction

2. Ludlow place plan

- 2.1 Vision for Ludlow
- 2.2 Ludlow Profile- local evidence
- 2.3 Community led planning in Ludlow
- 2.4 Ludlow Delivery Framework

3. Community Hubs place plan

- 3.1 Vision for
 - Burford
 - Clee Hill
 - Onibury
- 3.2 Community Hub profiles
- 3.3 Community led planning in the Community Hubs
- 3.4 Delivery Framework for the Community Hubs

4. Community Clusters place plan

5. Rural Hinterland place plan

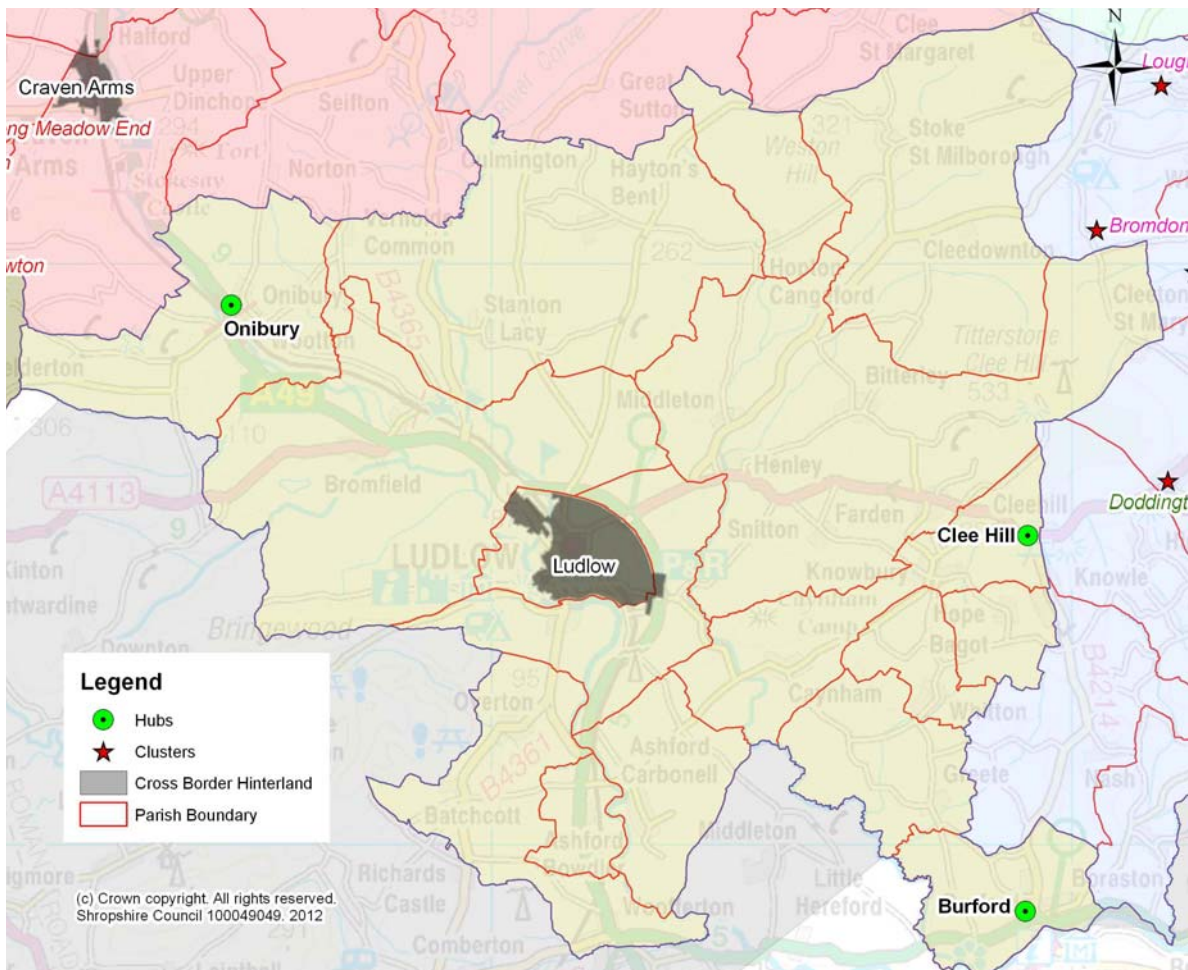
- 5.1 Vision for the rural hinterland
- 5.2 Rural Hinterland profile
- 5.3 Community led planning in the Rural Hinterland
- 5.4 Delivery framework for the Rural Hinterland

Appendix 1- Ludlow Market Town Profile

1. INTRODUCTION

What is this document?

- 1.1 This document is the Place Plan for *Ludlow and its surrounding area*. It summarises the infrastructure and investment requirements needed to deliver the community vision and aspirations for Ludlow, its Community Hubs, Clusters and surrounding Rural Hinterland.
- 1.2 It covers the area in the map, below, which is based on the perceived area of influence for the main settlement, Ludlow, as identified by Ludlow Town Council, but excluding areas covered in other Place Plans (eg Cleobury Mortimer).



- 1.3 Therefore, whilst this Place Plan covers the area identified, it is important to note that it does not work in isolation, but is part of a set of 18 interlinked Place Plans, covering Shropshire's main settlements and their hinterlands. The above map provides an overview of the Place Plans bordering the Ludlow locality, in addition to the perceived cross border areas of influence, which lie outside Shropshire and provide a

focus for cross border working with neighbouring local authorities and partners.

- 1.4 Within Ludlow and its surrounding area, a number of Community Hubs have been put forward by parish councils in the Ludlow locality, for inclusion in the Site Allocations and Management of Development (SAMDev) DPD. These are identified on the map and defined as settlements where limited development is needed to ensure that the local community becomes more sustainable. As such, development in these settlements will be based on community benefit, such as the provision of local facilities, economic development or housing for local needs. Community Clusters have the same role as Hubs, but comprise a collection of networked settlements, which together require limited further development to improve sustainability. As no Clusters have been identified in this locality, the remaining area is defined as countryside, where further development, through the SAMDev DPD, will be strictly controlled and only allowed in exceptional circumstances
- 1.5 The Community Hubs currently identified have been put forward as part of initial work to prepare the SAMDev DPD. However, further Hubs and Clusters may be put forward as part of future consultation stages in the preparation of the SAMDev DPD. It is anticipated, that the SAMDev DPD will be adopted in 2013 and at this point will confirm which settlements have the status of a Community Hub or Cluster.
- 1.6 There is, however, an ongoing opportunity for communities to 'opt in' as either a Hub or a Cluster at a later stage in the Local Development Framework Plan period (2006-2026), for example through a review of local parish plans. The Council will therefore continue discussions with the local community to identify the community benefits that can be delivered through development.
- 1.7 In identifying the local infrastructure and investment, extensive discussions have been undertaken with relevant town and parish councils, in addition to local infrastructure and service providers.
- 1.8 Whilst this initial version of the Ludlow Place Plan primarily focuses on the investment requirements for Ludlow, detailed discussions with parish councils within the Ludlow locality are ongoing and will inform the updated version of the Ludlow Place Plan in due course. This is part of an ongoing process of community led working, which will ensure that the Ludlow Place Plan is kept up to date and continually reflects local needs and priorities.
- 1.9 The Place Plans form part of the Shropshire Local Development Framework (LDF) Implementation Plan and Local Investment Plan. As outlined in Figure 1, this package of documents is aimed at ensuring the delivery of sustainable places in Shropshire.

- 1.10 The LDF Implementation Plan outlines all the infrastructure requirements which are needed to support the level and location of development for Shropshire, as outlined in the Core Strategy. It covers physical infrastructure (transport, energy, water, waste, minerals and ICT/digital), economic infrastructure (regeneration, business growth and employment, skills training) social infrastructure (education, health and community facilities) and green infrastructure (open spaces, recreation and sporting facilities and green public realm) requirements. It provides a framework for developers and key infrastructure providers on the requirements for implementing Shropshire's development strategy, including setting out a need for developer contributions and providing clarity on what will be addressed via the Community Infrastructure Levy (CIL list).
- 1.11 The Local Investment Plan (LIP) will help the Council and its partners to work together to coordinate various funding streams. The Shropshire LIP is available on the Wets Housing Market Area Partnership website.
- 1.12 The 18 Place Plans list all of the priorities, needs and aspirations on a place by place basis for each of Shropshire's communities, building on the community's requirements identified in the town and parish plans and local evidence of infrastructure requirements from infrastructure and service providers. As such, they seek to bring together "bottom up" priorities, originating from community aspirations, with "top down" schemes and actions, originating from large organisations such as Shropshire Council. They will be used to assist in prioritising which are the most important schemes within a particular place, given limited resources, and will help provide a delivery programme which will create and maintain Ludlow and its surrounding areas as sustainable communities.

How is this document structured?

- 1.13 As the Place Plan for *Ludlow and its surrounding area*, this document identifies and divides the infrastructure and investment requirements for Ludlow, the Community Hubs, Clusters and Rural Hinterland, into the following themes:
- Housing and cohesive, sustainable communities
 - Economic investment and opportunity
 - Social and community infrastructure
 - Environment and climate change
 - Transport and accessibility
- 1.14 Each infrastructure requirement has been identified according to whether it is considered to be 'critical', 'priority' or 'key' and colour coded according to whether there are any known barriers to it's delivery.

- 1.15 Infrastructure schemes which have been coloured **red** are known to have important barriers which are preventing their delivery, such as a lack of funding. Infrastructure schemes which have been coloured **amber** are known to have some barriers to delivery such as an incomplete set of funding or no known timescale for delivery. Schemes that are coloured **green** have no known barriers to delivery and therefore have identified partners, funding and timescales for delivery.
- 1.16 Critical infrastructure is that which is fundamental to development, such as electricity, water and road access, without which development can simply not take place. Priority infrastructure is that, which for a given point in time has been identified as a particular priority, in order to meet a specific need or requirement. Key infrastructure reflects the full range of infrastructure and investment needs that are required to create and maintain places as sustainable communities.

How will this document be used to deliver sustainable places in Shropshire?

- 1.17 Through ongoing engagement with the local community, this plan seeks to record and convey the priorities for Ludlow and its surrounding area to partners who are in a position to invest money and deliver schemes to meet local needs.
- 1.18 The Plan will also be used to inform what contributions towards local infrastructure will be sought from development within Ludlow and its surrounding area, through the Community Infrastructure Levy and developer contributions, to meet community priorities.
- 1.19 In summary therefore, this Place Plan has the following roles:

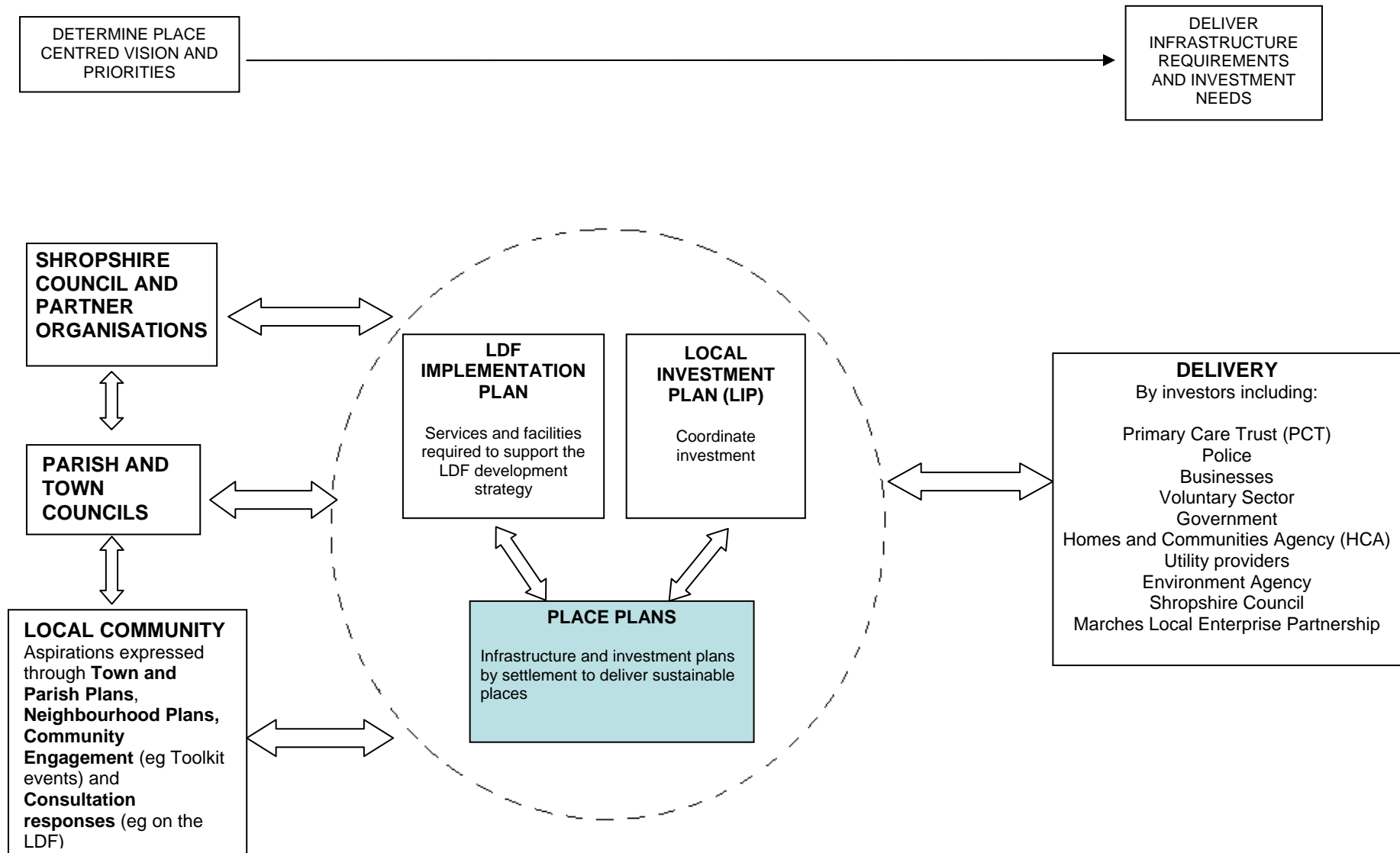
DECISION-MAKING PROCESS

- Provides a mechanism for taking decisions through the appropriate channels

CONTENT

- Provides details of how the vision will be delivered in Ludlow and the surrounding area.
- Records and conveys the agreed shared priorities to partners who are in a position to invest and deliver;
- Identifies priorities for contributions towards local infrastructure from development, through the Community Infrastructure Levy and through other external funding sources.

Figure 1: Delivering sustainable places



2. LUDLOW PLACE PLAN

2.1 VISION FOR LUDLOW

The vision for *Ludlow* is found in the Core Strategy Policy CS3, and is as follows:

Ludlow will provide a focus for development, whilst respecting its historic character.

Core Strategy Policy CS3

In addition, the Ludlow Town Plan (2004-2009) sets out the local community's vision for the town, as follows:

Ludlow is a town that values its past and wishes to build for the future while actively improving and enhancing the life of its residents.

Mission Statement- Ludlow Town Plan (2004-2009)

2.2 LUDLOW PROFILE

A town profile for Ludlow is provided in Appendix 1. This provides an overview of the social, economic and environmental characteristics of Ludlow, based on the latest available local evidence.

2.3 COMMUNITY LED PLANNING IN LUDLOW

Community Led Plans

Ludlow Town Council has recently developed a new Town Plan for the period up to 2015. The Town Plan identifies a number of priority areas and objectives which are outlined below. More detailed information on these priority areas and objectives can be found in the Town Plan.

Ludlow Future: Ludlow's Plan for 2010-2015

'Youth'

- Youth facilities and play areas
- Provision of youth activities, youth training, drop in facilities
- Ludlow Town Council to try to coordinate and integrate activities

'The Elderly'

- Provision of adequate and improved services for this expanding and ageing group
- Support existing services
- Seek to promote services & where inadequate, to fill gaps
- Encourage development of a multiuse building with services similar to Mayfair, Church Stretton

- Annual party

‘Residents - General’

- Safeguard existing leisure provision, and enhance
- Promote an extended riverside path
- Encouragement to special events such as Festivals, rallies, Green Fair
- Maintain a high standard of maintenance in all Council owned leisure/amenity areas
- Health – support improvement and expansion of Ludlow hospital facilities
- Lighting – conversion of Town Council street lighting to low energy use and work to ensure less light pollution
- Continue policy of maintenance and enhancement of the cemetery
- Maintenance and improvement of Ludlow’s amenity areas.

‘Economy’

- Encourage tourism, and maximize enjoyment, spend, likelihood of return
- Build & maintain the unique identity of Ludlow
- Develop publicity especially linked local websites and social networking sites
- Provide for disabled
- Improve facilities e.g. toilets, audio information, signage
- Support festivals, rallies and special activities
- Improve Park & Ride, signage, Sunday & evening buses (Transport)
- Encourage Shropshire Council to improve and maintain regularly all signage
- Promotion of the economy, job diversity, and availability by all possible means
- Support business e.g. provision of training
- Support farming and food industry

‘Environment’

- Support initiatives aimed at carbon emissions reduction
- Support moves to introduce carbon neutral generation of electricity
- Support built heritage environment, and preservation of Ludlow’s landscape
- Promote health
- Christmas LED lights

‘Affordable Housing’

- Promote provision of Affordable to rent or to buy housing for local people

‘Town Centre’

- Develop a vision for the Town Centre
- Investigate creation of a Town Centre Manager
- Maintain the architectural heritage of Ludlow
- Seek best solution to parking problems
- Seek a more effective use of accommodation above shops
- Seek an acceptable policy on A boards
- Encourage a crime free, welcoming environment in the town

‘Equality’

- Seek ways to reduce inequality, particularly working with existing providers and those working with disadvantaged people and those with disabilities

'Transport'

- Support for development of transport hub, but only after local consultation on need, design etc
- Restrict and simplify signage- there is a need to consider how to minimise signage
- Improvement to A49 junctions- particular need for a roundabout at the northern junction
- Encouragement of cycling
- Encouragement of walking, pedestrian priority and pedestrian pathways
- Lobby for development of a Weeping Cross roundabout
- Pavement on Gravel Hill
- Enforcement of existing restrictions to prevent large lorries and coaches entering central area- length restrictions are a more important consideration than weight restrictions on Ludford bridge
- Seek and improved bus service, particularly connecting Ludlow and surrounding villages such as Burford. A service bus not just a responsive bus

Local Joint Committee

Ludlow Town is located within the Ludlow and Clee Local Joint Committee Area. The following needs and priorities have been raised by the local community as part of Local Joint Committee meetings:

Ludlow and Clee Local Joint Committee

- Road safety, speeding and HGVs
- Rural transport and parking
- Youth opportunities and facilities
- Police and community safety
- Streetscene and litter
- Ludlow town bus routes
- Local health care provision (New Ludlow hospital)

Other Community Consultations

Local Development Framework Core Strategy – Policy Directions Consultation (August-October 2009)

Ludlow Town Council representations on the Core Strategy

(Representation reference no CORE STRATEGY06264/00001/007)

- More business investment is needed in Ludlow
- More business use land should be identified
- Tourism is very important to Ludlow and policy approach is supported

Local Development Framework Core Strategy – Final Plan Publication (January-March 2010)

Ludlow Town Council representations on the Core Strategy

(Representation reference no CORE STRATEGY/09RSUB/06264/00002/001)

- There is a need for adaptable housing, especially care homes to cater for an ageing population.
- Affordable housing is a major issues because of low incomes and unemployment
- Transport hub
- Employment land requirements

- Opportunities for more walking and cycling
- Developing opportunities for more walking and cycling and creating the conditions to encourage this

Local Development Framework Site Allocations and Management of Development DPD (SAMDev) – Issues and Options Consultation (April- June 2010)

Ludlow Town Council representations on the SAMDev

(Representation reference no SAMDEV DPD/04IOP/002398/00003)

- Improvements to sports and recreation facilities, including the Wheeler Road Play and Recreational Area which requires pathways leading to the skate park and also the provision of a scooter park or extension to the skate park.
- Replacing the Boxing Club with a modern fit for purpose community centre Additional pathways and pavements including the development around Ludlow Castle. Gravel Hill requires an improved pavement to provide for buggies & motorised scooters
- The Town would benefit from a number of additional pavements pathways including the development around Ludlow Castle, Gravel Hill requires an improved pavement to provide for buggies & motorised scooters. A Heritage Lottery Fund bid is to be submitted for development of the Castle Gardens including the retaining wall, the town walls and the Castle ancient pathways although provision is required in numerous areas with in the borough to provide additional recreation and convenience to residents and visitors. Consideration for 'pedestrian priority' area in Ludlow are likely to be pursued.
- Current provision of cycle paths around Ludlow is considered inadequate. All new developments should take into account the provision of cycle paths within the infrastructure requirements.
- Improved street lighting. A lighting survey is needed to provide adequate lighting scheme for the future and to include down lighting preventing light pollution and movement sensors to be more energy efficient.
- It is vital that Ludlow and the surrounding area within the hinterlands has its own local hospital services with adequate number of beds with the capacity to sustain and aging population and the growing population for the area.
- Provision of adequate drainage for new developments and consideration of the flooding issues in the Steventon New Road, Temeside and Lower Corve Street areas and also areas of Linney adjacent to the Linney flood plain. In addition, particular emphasis should be given to concerns regarding any development off Foldgate Lane where a small ditch to the rear of Greenacres carries water through the railway embankment to Steventon New Road and has been the subject of serious drainage problems and flooding in the past.

Investing in Shropshire's Future- Local Infrastructure and Investment Workshop with Ludlow Town Council (20th September 2010)

- Ludlow's historic character is an important asset and needs to be preserved
- There is a need to improve street lighting and signage in the town
- Energy security
- Food security
- Flooding
- Lack of public toilets at the Eco Park is an issue
- There is a need to improve the transport facilities for the elderly and disabled and parents of small children, to provide access into the town

- There is a need for more bus and car parking
- Rail infrastructure improvements are required in terms of frequency of services and the provision of more carriages.
- Presence of large vehicles in the town centre is an issue
- Affordable housing provision is a priority as it is difficult to retain young people within the town.
- Opportunities for skill building and training for young people is needed
- The provision of care for the community is a key issue. There is a requirement for nursing home provision and for hospital beds and associated services.

Ludlow Community Toolkit Event – 19th October 2010

The following activities, facilities, services and infrastructure were considered to be the most important community assets by the event attendees:

Activities:

- Arts and heritage events
- Sports activities
- Walking and rambling activities
- Youth groups and clubs

Facilities:

- Community centre/village hall
- Parking
- Youth shelter or pod

Services:

- Healthcare
- Learning and training opportunities
- Shops

Infrastructure:

- Employment land
- Job opportunities
- Tourism and heritage infrastructure

The following points were raised by members of the community as ideas for projects to revitalise the town:

- Better use of Assembly Rooms
- Affordable rental housing (straw bale?) for key workers
- More affordable housing for local people
- Project to identify gaps/links of community centres in town eg BMC/Rockspring/Assembly Rooms and others
- Small rentable (by the hour) kitchens for small food businesses
- Develop a “Heritage Skills Centre” in Ludlow with opportunities to learn traditional building/constructions skills from local craftsmen
- Make Ludlow Assembly Rooms carbon zero and a local example of environmental sustainability
- A major project producing energy renewables preferably on a community sharing basis
- Visitor /interpretation centre for visitors
- Put sculpture on the roundabout to show pride in town, increase tourism and public art

- CCTV
- Saving land at East End of St Laurence's from being developed. St Laurence's is so important
- Area of land/open space on the edge of residential area for exercising dogs etc – Harry Tuffin's Field used to be that space

Full information and feedback from the Ludlow Toolkit event is available at:

(<http://www.shropshire.gov.uk/factsfigures.nsf/open/C6BE79E370240015802577760045C7C5>)

2.4 **INFRASTRUCTURE AND INVESTMENT DELIVERY FRAMEWORK FOR LUDLOW**

(This covers Ludlow settlement but excludes the rest of the parish, which is covered by the Rural Hinterland section, see page 102)

Infrastructure or investment requirements and opportunities	Critical Priority or Key	Lead delivery partner	Other partners	Cost	Funding secured	Funding gap	Timescale for delivery	Potential funding sources	Notes
Housing and cohesive, sustainable communities									
Developer contribution towards affordable housing	KEY	Shropshire Council (Development Services- Strategy and Development)		N/A	£11,700	N/A	Payable by Owner within 60 days of commencement.	Developer contribution	Developer contributions in relation to Land at Starstile Meadow. To be used to facilitate delivery of additional affordable and/or supported housing elsewhere in the Council's administrative area. Property up for sale. Development has not commenced- awaiting payment from developers.
Developer contribution towards affordable housing	KEY	Shropshire Council (Development Services- Strategy and Development)		N/A	£8,307	N/A		Developer contribution	Developer contributions in relation to the Warehouse, St Marys Lane. To be used to facilitate delivery of additional affordable and/or supported housing elsewhere in the Council's administrative area.

Infrastructure or investment requirements and opportunities	Critical Priority or Key	Lead delivery partner	Other partners	Cost	Funding secured	Funding gap	Timescale for delivery	Potential funding sources	Notes
Affordable housing provision	PRIORITY	Shropshire Council (Development Services- Strategy and Development)	Developers Registered Providers Homes & Communities Agency Landowners Town & Parish Councils	N/A	N/A	N/A	2010/11 to 2013/14	Homes & Communities Agency Grant Shropshire Council capital programme Registered Providers Developer cross-subsidy Developer cash contributions	33% of all new housing in Shropshire will be affordable housing, delivered through: <ul style="list-style-type: none"> • appropriate % of open market housing linked to developments • 100% affordable “exceptions sites” • better use of empty properties. <p>Delivery in this market town area includes small scale exceptions sites in the rural hinterland, including opportunistic “build your own affordable home” sites.</p> <p>Fishmore Road, Ludlow - Mixed site with planning permission for 93 units. Scheme phasing and affordable housing obligations</p>

Infrastructure or investment requirements and opportunities	Critical Priority or Key	Lead delivery partner	Other partners	Cost	Funding secured	Funding gap	Timescale for delivery	Potential funding sources	Notes
									<p>renegotiated due to financial viability issues. Section 106 Agreement signed December 2011 containing a revised obligation to provide 15% affordable housing (14 dwellings).</p> <p>Land at Riddings Road, Ludlow – Outline planning permission has been granted for a mixed tenure residential scheme of around 13 dwellings. Such a scheme would yield one affordable home on-site.</p> <p>Land adjacent to Church Close, Onibury – a potential scheme for South Shropshire HA to provide affordable housing in partnership with the community on land made available at £nil value by a local Estate in accordance with the provisions of a</p>

Infrastructure or investment requirements and opportunities	Critical Priority or Key	Lead delivery partner	Other partners	Cost	Funding secured	Funding gap	Timescale for delivery	Potential funding sources	Notes
									<p>Section 106 Agreement relating to another planning permission granted in the area.</p> <p>Clee View, Ludlow – South Shropshire HA has now secured Homes & Community Agency grant funding and started work on site to develop 5 x dormer-style bungalows for rent and shared ownership.</p> <p>South Shropshire HA also has a couple of potential future schemes in Ludlow for redevelopment of their existing housing stock that will require HCA funding.</p>
Housing for vulnerable people	KEY	Shropshire Council (Community Services- Housing Services)	Registered Providers, Specialist Care Providers,	Scheme dependent			2011-2015	Homes and Communities Agency, Shropshire Council	Includes provision to support sustainable independent living for vulnerable people including:

Infrastructure or investment requirements and opportunities	Critical Priority or Key	Lead delivery partner	Other partners	Cost	Funding secured	Funding gap	Timescale for delivery	Potential funding sources	Notes
			Voluntary Sector, local communities, schools and colleges, West Mercia Police					capital programme	<ul style="list-style-type: none"> sustainable living at home access to work education and training and community inclusion <p>Integrated preventative service provision with a Pathway approach to access and retain accommodation. Target groups include: older people, young people, people with learning disabilities, mental health needs, people at risk of homelessness, domestic violence, gypsies and travellers, offenders, substance misusers.</p>
Improving and adapting existing housing- includes regeneration	KEY	Shropshire Council, Registered Providers, Home owners (Community Services- Housing	Keep Shropshire Warm, Developers, Shropshire Home Improvement	Scheme dependent	Funding secured for social housing- Tenant wide: £2.5 million		2011-2015	Private sector funding	<p>Includes:</p> <ul style="list-style-type: none"> energy efficiency to reduce carbon emissions and tackle fuel poverty; upgrading social housing to meet

Infrastructure or investment requirements and opportunities	Critical Priority or Key	Lead delivery partner	Other partners	Cost	Funding secured	Funding gap	Timescale for delivery	Potential funding sources	Notes
		Services)	Agency Sure Start Childrens' Centres, Schools		available for social housing (per year). Also a further £3.1million over 4 years starting April 2011 from the HCA for decent homes				<p>the Decent Homes standard;</p> <ul style="list-style-type: none"> adaptations to meet changing needs, including disabled facilities grants; <p>The Council's Extended Schools Team has identified opportunities to inform and encourage parents to understand what they can do to improve energy efficiency of homes and how this can benefit them, through schools (Eco-Schools involvement) and children's centre drop-ins and activities.(Developing Environmentally Sustainable Sure Start Children's centres is being piloted in NW at Woodside, Oswestry rolling out to other</p>

Infrastructure or investment requirements and opportunities	Critical Priority or Key	Lead delivery partner	Other partners	Cost	Funding secured	Funding gap	Timescale for delivery	Potential funding sources	Notes
									centres later)
Aids and adaptations for social housing tenants	KEY	Shropshire Council (Community Services- Housing Services)		Tenant Wide: £225,000 (per year) for Social Housing	Tenant Wide: £225,000 (per year) for Social Housing	None	Ongoing	Shropshire Council	The £225,000 is to be used across Shropshire Council tenants homes for completing adaptations to tenant's properties. For example the money will be spent on Level Access Showers, Hand rails and stair lifts etc. The aim of completing adaptations is to improve the quality of life of our tenants and to give them the opportunity to stay in their homes.
Bringing empty homes back into use- includes affordable housing provision	KEY	Shropshire Council, Registered Providers, Property Owners (Community Services- Housing Services)	Local communities, voluntary sector agencies, schools and colleges	Scheme dependent			2011-2015	Empty Homes: New Homes Bonus	Funding to be put in place- scheme costs vary and are generally a package of funding . Seeking Homes and Communities Agency funding for 12 units countywide over 4 years @ £25,000 per unit= £300,000. Limited local authority funding

Infrastructure or investment requirements and opportunities	Critical Priority or Key	Lead delivery partner	Other partners	Cost	Funding secured	Funding gap	Timescale for delivery	Potential funding sources	Notes
									available during 2011-2012
Extra Care Housing	KEY	Shropshire Council (Community Services- Housing Services)	Registered Providers, Care Providers, Voluntary Sector, Local Communities	Scheme dependent			2012-2015		Locations to be determined. To include Market Town and Rural Area provision. Funding proposals being developed. Extra Care Housing provision targeted towards older people, especially frail older people, with planned provision for respite facilities and housing for people with disabilities.
Maintain access to Mortgage Rescue Scheme	KEY	Shropshire Council	Orbit Housing Association,	Approx £14 million available to	Amount available to Shropshire,	c£13,000 per property	March 2011-Spring 2013	Homes and Communities Agency,	Government sponsored program that helps the most vulnerable

Infrastructure or investment requirements and opportunities	Critical Priority or Key	Lead delivery partner	Other partners	Cost	Funding secured	Funding gap	Timescale for delivery	Potential funding sources	Notes
		(Community Services- Housing Services)	Citizens Advice Service, Credit Union, Registered Providers	west midlands region.	to be confirmed			DCLG Homeless and Prevention Grant	<p>members of society by providing direct financial help for eligible home owners so they can stay in their home.</p> <p>During 2009-11, the average purchase per property was £98,000. 11 properties were purchased at a total cost of £1,073,475. Reduction in Homes and Communities Agency funding will reduce the average funding available per property to £85,000. Incidence of mortgage difficulty is steadily increasing (40% increase over previous 12 months). Eligibility criteria for Mortgage Rescue Scheme has tightened, reducing the number of applicants able to access the scheme. Additional funding is therefore required to address the</p>

Infrastructure or investment requirements and opportunities	Critical Priority or Key	Lead delivery partner	Other partners	Cost	Funding secured	Funding gap	Timescale for delivery	Potential funding sources	Notes
									gap between the funding available and the amount required (c£13,000 per property) in order to maintain access to the scheme.
Economic investment and opportunity									
Market Towns Revitalisation Programme – Larger Market Towns Capital Programme	PRIORITY	Shropshire Council (Development Services- Economic Development)	Local businesses, residents, investors	£400,000 allocated	£400,000	None	2010-2015	Shropshire Council capital programme. Match funding from other sources will be explored including LJC funding.	Programme to support a range of capital projects which meet the Market Town Revitalisation Programme objectives.
Market Town Revitalisation Project- Dinham Wier	KEY	Millennium Trust	Shropshire Council (Development Services- Economic Development) Environment Agency	£350,000	£50,000 subject to match funding being secured	£300,000	2012-2014	Match funding from other sources needed- HLF, Veolia, EA	The project will provide improvements to the weir.

Infrastructure or investment requirements and opportunities	Critical Priority or Key	Lead delivery partner	Other partners	Cost	Funding secured	Funding gap	Timescale for delivery	Potential funding sources	Notes
Appoint Town Centre Manager	KEY	Ludlow Town Council						Town Council seeking external funding	The Town Council are seeking external funding to appoint a Town Centre Manager, who would have a wide range of functions, including coordinating efforts, countering the loss of facilities/services, maintaining and encouraging a vibrant market and speciality markets, promoting the attractiveness of the town centre, working to reduce number of empty shops/find temporary use, promoting business recycling, encourage participation of Ludlow Assembly Rooms and other providers, Investigate feasibility of pedestrian priority.
Ludlow Eco Park Phase II employment land	KEY	NHS	Shropshire Council		£1million	N/A	Ongoing		Expansion of employment land and provision of new community hospital.

Infrastructure or investment requirements and opportunities	Critical Priority or Key	Lead delivery partner	Other partners	Cost	Funding secured	Funding gap	Timescale for delivery	Potential funding sources	Notes
									The Town Council has identified that there is a need for public toilets at the Eco Park or an arrangement for the public to use toilets within the offices.
Community Hospital redevelopment	KEY	NHS	Shropshire Council				aspirational	Dependant on NHS funding	Potential mixed use for housing and employment once funding for new hospital has been clarified- need to identify new employment land to replace loss of eco-park
Adoption programme for Council business parks	KEY	Shropshire Council (Development Services- Economic Development)		£1million			2010-15	Shropshire Council	Ludlow Eco Park Ludlow Business Park
Shop Front Redecoration Scheme	KEY	Shropshire Council (Development Services - Historic Environment)	Ludlow Town Council				ongoing	Developer contributions	Secure funding for basic shop front repairs and redecoration to improve the appearance of the streetscene.
Pavement Lights/ Cellar Flaps Program	KEY	Shropshire Council (Development	English Heritage				ongoing	Developer contributions	Survey all town centre streets to assess condition and undertake repair and replacement

Infrastructure or investment requirements and opportunities	Critical Priority or Key	Lead delivery partner	Other partners	Cost	Funding secured	Funding gap	Timescale for delivery	Potential funding sources	Notes
		Services - Historic Environment)							program.
Ludlow Castle	KEY	Shropshire Council (Economic Development, Historic Environment)	English Heritage				ongoing		Improve links with local town centre businesses and improve wayfinding and interpretation.
The Butter Cross, King Street improvements	KEY	Ludlow Town Council	English Heritage, Shropshire Council (Development Services - Economic Development, Historic Environment)				ongoing	HLF, Ludlow Town Council, Shropshire Council	Identified as heritage at risk. Proposal to create an interpretation/ education centre and potential HLF bid. Key part of visitor resource and established community interest.
Ludlow Guildhall	KEY	Shropshire Council (Development Services - Economic Development, Historic Environment)	English Heritage				ongoing		Encourage alternative beneficial use which supports full occupation of the building.

Infrastructure or investment requirements and opportunities	Critical Priority or Key	Lead delivery partner	Other partners	Cost	Funding secured	Funding gap	Timescale for delivery	Potential funding sources	Notes
Marketing rural Shropshire as a tourism destination	KEY	Shropshire Council (Development Services- Economic Development)	Destination Management Partnership, including Telford and Wrekin, Cultural facilities	£150,000 (countywide)	£150,000 (countywide)	None	2009-2012	RDPE	<p>Strategic support for tourism marketing and infrastructure.</p> <p>Promoting cultural heritage and facilities in support of the Visitor Economy.</p> <p>The Council's Leisure Services Team has identified the opportunity for a bunk house YHA facility, to attract young tourists to the area.</p>
Facilitation of ICT /broadband technologies	KEY	Shropshire Council A private sector delivery partner will be procured using the BDUK framework	BDUK Town and Parish Councils		£16.4 million across all of Shropshire (£8.2 Shropshire Council and £8.2 million from BDUK)		2015		<p>The Connecting Shropshire aims to provide a minimum of 2 Mbps to all of Shropshire and as much superfast broadband as possible.</p> <p>The project will deliver to those communities that are not going to get either basic broadband or superfast broadband under the private sector</p>

Infrastructure or investment requirements and opportunities	Critical Priority or Key	Lead delivery partner	Other partners	Cost	Funding secured	Funding gap	Timescale for delivery	Potential funding sources	Notes
									rollout.
Rural Broadband Intervention Programme- Pilot project between Ludlow, Tenbury Well and Leominster	PRIORITY	Advantage West Midlands	Shropshire Council, Herefordshire Council, Worcestershire County Council, Malvern Hill District Council, Chambers of Commerce	£440,000	£440,000	None	2010-2012	RDPE funds secured by AWM	The project will establish a wireless technology Pilot in the area between Ludlow, Tenbury Wells and Leominster. It is hoped that this approach will encourage internet service providers to deliver rural broadband to these areas which are unlikely to receive infrastructure investment in the long term. It will also bring competition to some areas where there is currently none.
Social and community infrastructure									
Developer contribution towards maintenance of play area	KEY	Shropshire Council (Community Services- Culture and Leisure)	Parish Council	N/A	£23,000	N/A		Developer contribution	Developer contributions in relation to land between Parys Road and Riddings Road. Fund have been

Infrastructure or investment requirements and opportunities	Critical Priority or Key	Lead delivery partner	Other partners	Cost	Funding secured	Funding gap	Timescale for delivery	Potential funding sources	Notes
									committed to maintenance of Parys Road play area
Developer contribution towards maintenance of open space	KEY	Shropshire Council (Community Services- Culture and Leisure)		N/A	£10,000	N/A		Developer contribution	Developer contributions in relation to land adjacent to Riddings Road. Commuted open space maintenance
Developer contribution towards maintenance of play area	KEY	Shropshire Council (Community Services- Culture and Leisure)		N/A	£60,000	N/A	Open Space Contribution to be paid prior to occupation of any dwelling.	Developer contribution	Developer contributions in relation to Land At Fishmore Road. To be used for purchase of children's play equipment or open space maintenance of other use as agreed between landowner & Council. Development has not commenced- awaiting payment from developers.
Ludlow Health Facility	PRIORITY	PCT	Through the Door To Healthy Living	N/A	Yes	N/A	2011-2014	PCT funding	Development of a Health facility to co-locate Ludlow hospital and GPs and other health services on one site to serve South Shropshire. Tender process underway to

Infrastructure or investment requirements and opportunities	Critical Priority or Key	Lead delivery partner	Other partners	Cost	Funding secured	Funding gap	Timescale for delivery	Potential funding sources	Notes
			Sure start Children's Centres, Pre-School Learning Alliance						<p>select a developer. Site secured at Eco Park.</p> <p>Through the Door To Healthy Living have identified potential for the new medical facility to include integrated healthy lifestyle activities by having built in space for exercise and cooking facilities.</p> <p>The Council's Extended Schools Team has identified the need to consider links / integration with Children's Centres 'Food for Thought' courses, HENRY (Health Exercise and Nutrition in the Really Young) programme, 'Grow, Cook and Share' project, use of Pre-School Learning Alliance (PLA) 'Snackables' / 'Health Tots' sessions for</p>

Infrastructure or investment requirements and opportunities	Critical Priority or Key	Lead delivery partner	Other partners	Cost	Funding secured	Funding gap	Timescale for delivery	Potential funding sources	Notes
									parents, Breast Feeding Peer Support programme, Healthy Schools focus areas and new Extended Services provision at Ludlow Junior School,— aimed at enabling technology, cooking and family projects to take place, Ludlow Infant School CAFÉ
Review of primary school places to ensure sufficient provision	PRIORITY	Shropshire Council (Learning and Skills)	Developers	Dependent upon extent and location of development	None	To be determined through SAMDev	Dependent upon developers' timescales	Developer contributions, LA Capital Programme	An assessment of the effect on school places locally has been made based on revised levels of development with delivery spread evenly over the Plan period. This suggests that unfilled places exist in the town overall. Any requirements will be determined through SAMDev, based on need, however, it should be noted that for any sites that are allocated for 700+ dwellings

Infrastructure or investment requirements and opportunities	Critical Priority or Key	Lead delivery partner	Other partners	Cost	Funding secured	Funding gap	Timescale for delivery	Potential funding sources	Notes
									different principles for developer contributions will apply.
Review of primary school facilities to meet local needs	KEY	Shropshire Council (Learning and Skills/Family Care and Wellbeing)	Developers Children's Centres	Dependent upon extent and location of development	None	To be determined through SAMDev	Dependent upon developers' timescales	Developer contributions, LA Capital Programme	To be fully determined by SAMDev, based on need. The Council's Extended Schools Team has identified the need to consider integrated Children's Centre provision on site from outset – ensuring common goals and language and supporting smooth transition. Consideration should also be to be given to provision of extended schools activities and the need for transport to support access to them. i.e. before and after school childcare, after school activity clubs sport and arts activities, links with parenting and family

Infrastructure or investment requirements and opportunities	Critical Priority or Key	Lead delivery partner	Other partners	Cost	Funding secured	Funding gap	Timescale for delivery	Potential funding sources	Notes
									activities and support for children with additional needs to ensure their inclusion in available provision. Community access to available provision would also maximise use of resources.
Review of secondary school places to ensure sufficient provision.	PRIORITY	Shropshire Council (Learning and Skills)	Developers	Dependent upon extent and location of development	None	To be determined through SAMDev	Dependent upon developer's timescales	Developer contributions, LA Capital Programme	To be fully determined through SAMDev, based on need. Current assessment has been based on revised levels of development with delivery spread evenly over the Plan period. Whilst unfilled places currently exist, consideration may need to be given to the provision of extra secondary school places beyond 2015.

Infrastructure or investment requirements and opportunities	Critical Priority or Key	Lead delivery partner	Other partners	Cost	Funding secured	Funding gap	Timescale for delivery	Potential funding sources	Notes
Review of secondary school facilities to meet local needs	KEY	Shropshire Council (Learning and Skills/Family Care and Wellbeing)	Developers Children's Centres	Dependent upon extent and location of development	None	To be determined through SAMDev	Dependent upon developer's timescales	Developer contributions, LA Capital Programme	To be fully determined by SAMDev, based on need. The Council's Extended Schools Team has identified the need to consider provision of extended schools activities and the need for transport to support access to them. A safe place to be for secondary aged pupils. (particularly Yr 7s in support of transition to secondary school), after school activity clubs sport and arts activities, links with parenting and family activities and support for children with additional needs to ensure their inclusion in available provision. Community access to available provision would also maximise use of resources

Infrastructure or investment requirements and opportunities	Critical Priority or Key	Lead delivery partner	Other partners	Cost	Funding secured	Funding gap	Timescale for delivery	Potential funding sources	Notes
Ludlow Assembly Rooms	KEY	Shropshire Council (Community Services- Culture and Leisure)	Ludlow Town Council	£2-3 million	None		Ongoing		In need of modernisation. The Town Council has identified the potential for the Assembly Rooms, Museum and Visitor Centre to be made into a Heritage Centre.
Ludlow Boxing Club	KEY	Shropshire Council (Development Services - Economic Development, Historic Environment)	Ludlow Town Council						Secure funds for redevelopment to include a community facility.
Leisure centre	KEY	Shropshire Council (Community Services- Culture and Leisure)	Teme Leisure Shropshire Council (Disabled Children's Team) Shropshire Youth / Positive				2010-2011		Refurbishment of facilities. Investment into the leisure centre is planned for 2010-2011. There is potential to use the leisure facility as a hub for cycle routes and short circular walks. The Council's Extended Schools Team has identified the need to

Infrastructure or investment requirements and opportunities	Critical Priority or Key	Lead delivery partner	Other partners	Cost	Funding secured	Funding gap	Timescale for delivery	Potential funding sources	Notes
			Activities						consider provision for children with a disability and/or additional need. Appropriate allocation of equipment and time for specialist clubs or training of staff to comfortably include children with disabilities. Demand developing as outlets for parent voice increase e.g. South West Community Working Group, The 'Empathy' Group.
Provision of allotments	PRIORITY	Shropshire Council (Community Services- Culture and Leisure) Ludlow Town Council	Pre School Learning Alliance				ongoing	Developer contributions	The PPG17 Study has identified an under provision of allotments. The Town Council want to increase provision at Linney Park and Dinham. The Pre School Learning Alliance has identified the potential to include allotments for pre-school/family use as part of the Rockspring nursery 'Grow Cook and

Infrastructure or investment requirements and opportunities	Critical Priority or Key	Lead delivery partner	Other partners	Cost	Funding secured	Funding gap	Timescale for delivery	Potential funding sources	Notes
									Share' project. Between 31 and 39 plots are suggested.
Provision of recreational facilities	PRIORITY	Shropshire Council (Community Services- Culture and Leisure) Ludlow Town Council	South Shropshire Housing	c£136.54 per m ² for a Local Area for Play plus c£4.37 x 20 for ongoing maintenance. c£143.55 per m ² for Local Equipped Area for Play plus c£7.65 x 20 for ongoing maintenance			Ongoing	Developer contributions	The Town Council has identified the need for additional play provision in Ludlow, including the potential for 'trim parks' for the over 50s. South Shropshire Housing has identified a deficit in the play provision at Rocks Green housing development.
Provision of outdoor sports facilities	KEY	Shropshire Council To facilitate implementation of the Playing Pitch Strategy (PPS) through the PPS Group, as set out in the PPS Action Plan 2010, in partnership		Pitch provision = c£42.60 per m ² plus c£1.31 per m ² x 20 for ongoing maintenance. Courts =			ongoing	Developer contributions	The Playing Pitch Strategy has identified that Ludlow should have a minimum of 1 multi-pitch site providing for competition and training, with good quality on-site changing and toilet provision, appropriate

Infrastructure or investment requirements and opportunities	Critical Priority or Key	Lead delivery partner	Other partners	Cost	Funding secured	Funding gap	Timescale for delivery	Potential funding sources	Notes
		as appropriate. Ludlow Town Council		c£89.75 per m ² plus c£2.75 per m ² x 20 for ongoing maintenance. Greens = £40.96 per m ² plus £4.02 per m ² x 20 for ongoing maintenance costs.					for, and accessible to, all user types.
Shropshire Hills LEADER Programme (focus on hinterland not the market town)	KEY	AONB with Shropshire Council as accountable body	AONB Partnership	£1.32 million	£1.32 million	None	2009-2013	RDPE	Supports basic services, village renewal and development, conserving/upgrading rural heritage, training and information, co-operation. Impact also on environment. Most of the funding is committed. Eligibility criteria are complex. The Council's Extended

Infrastructure or investment requirements and opportunities	Critical Priority or Key	Lead delivery partner	Other partners	Cost	Funding secured	Funding gap	Timescale for delivery	Potential funding sources	Notes
									Schools Team has identified the need to link with Extended Services steering groups to identify need / overlap and consider access to Extended Schools activities – that do not necessarily have to take place in a school but should meet the needs and requirements of the community.
Environment and climate change									
Upgrade to Ludlow Sewage Treatment Works	CRITICAL	Severn Trent Water	Environment Agency	N/A	Yes	None	2010-2015	Severn Trent Water's business plan (AMP)	An assessment of the effect on the sewer network has been made based on revised levels of development with delivery spread evenly over the Plan period. Whilst there is no current hydraulic capacity at the Ludlow Waste Water Treatment Works, there are no known physical constraints that would prevent additional

Infrastructure or investment requirements and opportunities	Critical Priority or Key	Lead delivery partner	Other partners	Cost	Funding secured	Funding gap	Timescale for delivery	Potential funding sources	Notes
									capacity being provided at the treatment works. The timing of delivery will be taken into account as part of a phasing policy within SAMDev.
Upgrades to the sewerage network	CRITICAL	Severn Trent Water	Developers	N/A	None	Yes	Ongoing The sewer network is currently being reviewed by Severn Trent Water and will continue to be reviewed every 6 months as part of the water company's sewer network plans to allow issues to be	Options are currently being appraised by Severn Trent Water as part of their capital investment programme.	All the flows from the north of Ludlow are pumped south under the river to a gravity sewer upstream of Ludlow STW by a 300m diameter rising main approx 420m long. There are isolated flooding problems on a small sub catchment in the centre of Ludlow (east of the railway) but this problem has recently been deferred due to its high cost. However, this flooding problem should not be affected by future development locations, although detailed modelling would be

Infrastructure or investment requirements and opportunities	Critical Priority or Key	Lead delivery partner	Other partners	Cost	Funding secured	Funding gap	Timescale for delivery	Potential funding sources	Notes
							addressed in a timely manner		required, once specific development locations are available. There are also known hydraulic restrictions to the south east of Ludlow (south of Sheet Road) which may be susceptible to additional development flows. To the east of Ludlow there are several combined sewer overflows which could be affected by development to the north west of Ludlow. Once specific development locations are known, it is recommended that further assessment be undertaken.
Assessment of local flood risk	PRIORITY	Shropshire Council (Development Services- Highways and Transportation)	Severn Trent Water, Environment Agency	£80,000	None	£80,000	2012 - 2015	Shropshire Council capital programme, developer contributions	Assessment of surface water flood risk in Ludlow, development of hazards maps and an action plan for addressing the issues identified.

Infrastructure or investment requirements and opportunities	Critical Priority or Key	Lead delivery partner	Other partners	Cost	Funding secured	Funding gap	Timescale for delivery	Potential funding sources	Notes
Flood warning provision- installation of additional flood gauges	KEY	Environment Agency	Developers	£1,000 per dwelling	None	£1,000 per dwelling	Ongoing		Developer contribution/Environment Agency funding assumed.
Biogas plant (energy from waste)	KEY	Shropshire Council	DEFRA					Trial plant with funding from DEFRA	Runs on co-collected municipal and commercial food waste to produce electricity and fertiliser.
River Teme Corridor	KEY	Environment Agency	Shropshire Wildlife Trust,					Environment Agency/ Shropshire Wildlife Trust	Enhancement works to the River Teme, Whitcliffe area, Dinham Green and Gallows Bank which are key sites.
River Teme Hydro Electric Scheme	KEY	Ludlow Town Council/ Environment Agency	Shropshire Council				aspirational		The Town Council recognise the potential for energy production from the Teme Weir.

Infrastructure or investment requirements and opportunities	Critical Priority or Key	Lead delivery partner	Other partners	Cost	Funding secured	Funding gap	Timescale for delivery	Potential funding sources	Notes
Street lighting-conversion to minimise electricity	KEY	Ludlow Town Council						Ludlow Town Council budget	The Town Council are keen to convert Ludlow's street lighting to minimise electricity consumption, including light sensitive controls
Provision of natural and semi natural open space	KEY	Shropshire Council (Community Services- Culture and Leisure) Ludlow Town Council					ongoing	Developer contributions	The PPG17 Study has identified an under supply in the provision of natural and semi natural open space. The green network within Ludlow should be maintained and enhanced by including on-site natural and semi-natural greenspace provision within developments. Similar off-site provision will also be allowed, where appropriate, to meet the targets set out in Natural England's Accessible Natural Green Space Standard (ANGSt) and consolidate Shropshire's

Infrastructure or investment requirements and opportunities	Critical Priority or Key	Lead delivery partner	Other partners	Cost	Funding secured	Funding gap	Timescale for delivery	Potential funding sources	Notes
									Environmental Network surrounding Ludlow.
Town Centres Approaches	KEY	Shropshire Council (Development Services - Historic Environment)	Civic Society				ongoing	Shropshire Council Developer contributions	Upgrade all approaches into the town centre.
Ludlow Town Walls	KEY	Ludlow Town Council	Civic Society English Heritage, Shropshire Council (Development Services – Historic Environment)		£1,800		ongoing	English Heritage management grant for 2011/2012, Other potential funding sources: HLF, Shropshire Council	Identified as heritage at risk. Part of the town's HLF bid. Established Trust. An integral part of the town's heritage interest and significance and tourism offer. Vulnerability of walls to climate change and development pressures require ongoing management/ maintenance

Infrastructure or investment requirements and opportunities	Critical Priority or Key	Lead delivery partner	Other partners	Cost	Funding secured	Funding gap	Timescale for delivery	Potential funding sources	Notes
Improvements to the streetscene- install tourist attraction signage, improve paving.	KEY	Ludlow Town Council	Shropshire Council (Development Services - Historic Environment)					Ludlow Town Council budget	<p>Ludlow Town Council is keen to install local tourist attraction signage and has identified the opportunity to use york paving for the pavements, in keeping with the historic nature of the town.</p> <p>Reinstatement of cobblestones.</p> <p>Survey to establish where modern railings should be replaced with more traditional design, plus condition survey of existing historic railings and program of repair where necessary.</p> <p>Produce landscape strategy to identify opportunities for improvements to visual amenity through landscaping.</p>
Urban Landscape	KEY	Shropshire		C£4,000			aspirational	Developer	Undertake an Urban

Infrastructure or investment requirements and opportunities	Critical Priority or Key	Lead delivery partner	Other partners	Cost	Funding secured	Funding gap	Timescale for delivery	Potential funding sources	Notes
Character Assessment		Council (Development Services – Historic Environment)						contributions	Landscape Character Assessment of Ludlow
Shuts and Passageways Improvement Program	KEY	Shropshire Council (Development Services – Historic Environment)	Ludlow Town Council, Civic Society.				Ongoing	Developer contributions	Survey all for current conditions. Public consultation to identify key areas. Increased street cleaning program/waste collection. Re-lay/repair appropriate paving, repair/redecorate walls/ceilings. Introduce/repair/replace identification signs to both ends of shuts. Install consistent lighting to increase use and public safety. Promotion of their use for pedestrians, tourism. Open any boarded up shut shop fronts and re-occupy. Series of interpretation boards/plaques to increase community

Infrastructure or investment requirements and opportunities	Critical Priority or Key	Lead delivery partner	Other partners	Cost	Funding secured	Funding gap	Timescale for delivery	Potential funding sources	Notes
									interest and tourism
Backlands Project	KEY	Shropshire Council (Development Services – Historic Environment)	Shop owners				Ongoing	Shop owners	Encourage repair/ redecoration of rear of buildings that are visible to the public (elevations, out buildings, passageways). Promote reuse/reoccupation of vacant buildings - introduce appropriate lighting. Interpret with plaques/boards at public interfaces
Pigeons/Vermin Prevention Program	KEY	Shropshire Council (Development Services - Historic Environment, Environmental Health)					ongoing	Developer contributions	Deterrent program to be established including public education initiative (i.e. don't feed the pigeons). Step up garbage pick up and install appropriate garbage bins/recycling bins to hinder problem. Repair/replace old pigeon netting/introduce where applicable
Survey of important views in and out of Ludlow.	KEY	Shropshire Council (Development Services - Historic	Ludlow Town Council				Ongoing.	Shropshire Council	Fundamental/important town views in and out to be surveyed. Introduce accessible public areas

Infrastructure or investment requirements and opportunities	Critical Priority or Key	Lead delivery partner	Other partners	Cost	Funding secured	Funding gap	Timescale for delivery	Potential funding sources	Notes
		Environment)							such as walkways, promenades, seating facilities, viewing platforms.
Production of list of Locally Important Buildings.	KEY	Shropshire Council (Development Services - Historic Environment)	Ton Council. Civic Society. English Heritage				ongoing		Local Listing Initiatives supported by English Heritage and PPS5. undertake public consultation exercise to create list of 'Buildings of Local Architectural or Historic Interest' (non-statutory list) List would identify local heritage assets that are valued by local community but not statutorily listed that would be afforded some degree of protection in the planning system. Involves survey work, preparation of report to Cabinet, publication of list, promotion of list
Shropshire Community Archaeological Fund	KEY								Opportunity for the development of a fund in support of targeted community-led archaeology projects.

Infrastructure or investment requirements and opportunities	Critical Priority or Key	Lead delivery partner	Other partners	Cost	Funding secured	Funding gap	Timescale for delivery	Potential funding sources	Notes
Community Tree Scheme	KEY	Shropshire Council (Development Services – Natural Environment)	Developers, Ludlow Town Council, Shropshire Council (Highways)	C£2640 per ha planted with tree whips. C£260 per new street tree.	£5000 to be shared throughout the county		ongoing	Developer contributions	Run an extensive Community Tree Scheme for Ludlow to provide opportunities to enhance the natural environment of the area. Costs include planting, stakes, tree guards and watering to establish trees over first 3 years.
Transport and accessibility									
Improvement to bus infrastructure and bus services	PRIORITY	Shropshire Council (Development Services- Highways and Transportation)	Bus operators, All schools as part of discussion	c£500,000	None	c£500,000	2011-2026	Developer contributions/ LTP funding	To include: <ul style="list-style-type: none"> Bus Interchange and Information Point improvements The Town Council have highlighted the need for improved bus services, particularly connecting Ludlow with surrounding villages such as Burford with a regular bus service rather than just a 'responsive' service.
Develop and improve the cycle and pedestrian network	PRIORITY	Shropshire Council	Community Action Teams,	c£1million	None	c£1 million	2011-2026	Developer contributions/ LTP funding	Developer funded Likely to require new River/ A49/Railway

Infrastructure or investment requirements and opportunities	Critical Priority or Key	Lead delivery partner	Other partners	Cost	Funding secured	Funding gap	Timescale for delivery	Potential funding sources	Notes
		(Development Services - Highways and Transportation)	Schools						<p>crossing dependant upon location of new development</p> <p>Projects to be identified in LTP3 under a proactive programme of improvement to footways, ramps, crossings and signals</p> <p>To include:</p> <ul style="list-style-type: none"> • Lady Hatton Cycle loop • Improvements to Corination Avenue/ Bromfield Road cycleway • Station Road- Eco Park (Dark Lane) cycle route • Improved signing • Bromfield to Brimfield cycle route • Consideration of 20mph speed limits <p>However, most development site</p>

Infrastructure or investment requirements and opportunities	Critical Priority or Key	Lead delivery partner	Other partners	Cost	Funding secured	Funding gap	Timescale for delivery	Potential funding sources	Notes
									<p>options would require provision of a new foot/cycle bridge over the river and/or A49.</p> <p>The Town Council are keen for pedestrian priority areas to be introduced in the old town and for the Ludlow 21 Cycling Plan to be adopted. The Town Council have also highlighted the pavement on Gravel Hill.</p>
Installation of historic finger posts, waymarkers, milestones, mileposts and street signs.	KEY	Shropshire Council (Development Services - Historic Environment)					ongoing	Developer contributions	Survey of existing conditions and research into lost features. Repair or reinstate where necessary

Infrastructure or investment requirements and opportunities	Critical Priority or Key	Lead delivery partner	Other partners	Cost	Funding secured	Funding gap	Timescale for delivery	Potential funding sources	Notes
Improvement of car parks	KEY	Shropshire Council (Development Services - Historic Environment)					ongoing	Developer contributions	Identify opportunities to improve the visual amenity of car parks in the historic town centre. Increase provision of wayfinding signs and landscaping.
Junction capacity and safety improvements where necessary to facilitate development	CRITICAL				None	Ongoing	Ongoing		Fully developer funded
Local highway improvements, traffic management, parking provision and speed and safety management	PRIORITY	Shropshire Council (Development Services- Highways and Transportation)		c£500,000	None	c£500,000	2011-2026	Developer contributions/ LTP funding	<p>To include:</p> <ul style="list-style-type: none"> • Car parking provision and traffic calming • Consideration of more 20mph speed limits <p>The Town Council are keen for a roundabout to be introduced on the A49 north of Ludlow. The Town Council have also highlighted the Weeping Cross</p>

Infrastructure or investment requirements and opportunities	Critical Priority or Key	Lead delivery partner	Other partners	Cost	Funding secured	Funding gap	Timescale for delivery	Potential funding sources	Notes
									roundabout.
Car and cycle parking facilities for new developments	CRITICAL				None	Ongoing	Ongoing		
Cycle and pedestrian facilities – on site, adjacent to or forming strategic links to retail or employment or large residential developments (50+ dwellings)	CRITICAL				None	Ongoing	Ongoing		
Bus infrastructure (e.g. stops and shelters, bus gates) where necessary to serve new development	CRITICAL				None	Ongoing	Ongoing		Fully developer funded

Infrastructure or investment requirements and opportunities	Critical Priority or Key	Lead delivery partner	Other partners	Cost	Funding secured	Funding gap	Timescale for delivery	Potential funding sources	Notes
Subsidy for bus service improvements to improve service to development sites – retail or employment or large residential developments (50+ dwellings)	CRITICAL			c£120,000/yr for each additional bus	None	c£120,000/yr for each additional bus	Ongoing		Fully developer funded
Improved bus infrastructure and services- to include a public transport hub	PRIORITY			c£500,000	None	c£500,000	2011-2026		
Transport provision to support Safe Place to Be at Secondary School	KEY	Shropshire Council (Education)	Schools – secondary and feeder primaries, Shropshire Link				Ongoing		Prevent year on year question of whether or not provision will be possible. Consultation should identify need of working parents to be supported and access to provision for pupils living in the hinterland
Ludlow station improvements	KEY	DfT	Arriva Trains Wales				2010-2011	DfT via National Stations Improvement Scheme	The scheme is aimed at improving the ambience of the station for passengers. Work includes improvements to station shelters and

Infrastructure or investment requirements and opportunities	Critical Priority or Key	Lead delivery partner	Other partners	Cost	Funding secured	Funding gap	Timescale for delivery	Potential funding sources	Notes
									<p>provision of 3 line displays. In particular there is a tendency for local youths to congregate in the existing solid shelter on the northbound platform. Arriva Trains Wales are proposing to replace this shelter with a modern transparent design</p> <p>The Town Council have identified the need for a new ramp to be provided at the station to allow for disabled access.</p> <p>Historic Environment have identified need for integration and connectivity of the railway station with the rest of the town and beyond with increased wayfinding signs.</p>
Park and Ride facilities linked to the	KEY	Shropshire Council					aspirational		Potential opportunities for Park and Ride

Infrastructure or investment requirements and opportunities	Critical Priority or Key	Lead delivery partner	Other partners	Cost	Funding secured	Funding gap	Timescale for delivery	Potential funding sources	Notes
railway station		(Development Services- Highways and Transportation)							facilities linked to the railway station.
Various rights of way improvements to create new circular walks - removal of stiles and replacement of gates and enhanced directional signage to ensure easier access for all and to support 'Active Market Town' and sustainable transport initiatives	KEY	Shropshire Council (Community Services- Culture and Leisure)	Ludlow Parish Paths Partnership	£6,030.00	None	£6,030.00	2011-2026	Developer contributions/ LTP funding	<p>Replacing 9 existing stiles with gates for easier access improvements to the Rights of Way network and providing 27 new directional signposts</p> <p>Creation and enhancement of the Shropshire Way and creation of new circular walks to promote as a walking destination. Promotion of easier access routes and 'health walks' with Walking for Health schemes</p> <p>The Council's Extended Schools Team has identified the need to tie in with 'Healthy Living' work in schools, preschool settings and</p>

Infrastructure or investment requirements and opportunities	Critical Priority or Key	Lead delivery partner	Other partners	Cost	Funding secured	Funding gap	Timescale for delivery	Potential funding sources	Notes
									youth organisations. There is an opportunity for young people and families to participate in planning the design of new routes.
Extend riverside path	KEY	Ludlow Town Council	Landowners/ Shropshire Council (Community Services- Culture and Leisure)					Landowners/ grants/ Whitcliffe Commoners/ Shropshire Wildlife Trust	The Town Council are keen to work with landowners and Shropshire Council to extend the riverside path from Bread Walk to Charlton Arms

3. COMMUNITY HUBS PLACE PLAN FOR THE LUDLOW AREA

3.1 VISION FOR COMMUNITY HUBS

The vision for *Community Hubs* is found in the Core Strategy Policy CS4, and is as follows:

Community Hubs will have development that helps to rebalance rural communities by providing facilities, economic development or housing for local needs that is of a scale appropriate to the settlement.
Core Strategy Policy CS4

Within the Ludlow area, the following settlements have been put forward by the local community (via parish councils) as Community Hubs;

- Burford
- Clee Hill
- Onibury

3.2 PROFILE OF COMMUNITY HUBS IN THE LUDLOW AREA

3.3 COMMUNITY LED PLANNING IN COMMUNITY HUBS IN THE LUDLOW AREA

Community Led Plans

Tenbury Area Partnership- Community Action Plan (2012)

The following have been taken from the Tenbury Area Partnership Community Action Plan as identified community needs and priorities:

- Provide more opportunities for local employment and reassess the future for Tenbury Business Park
- Increase the diversity of local shops and ensure opening hours are coordinated with local events
- Encourage local shop owners to consider using vacant shops for creative art projects and to showcase businesses from the surrounding area
- To coordinate marketing and promotion of local events by improving the skills of the existing volunteer network specifically IT
- Work with the relevant partners to greatly improve IT infrastructure and access to high speed Broadband.
- To protect the rural character of the town and surrounding area. Encourage community groups to become involved in the design and implementation of landscape works where appropriate

- The River Teme and associated riverside need to be protected and improved for walking and access
- To ensure a scheme of flood protection is prioritised to protect local houses and businesses
- Encourage community groups to become involved in design and implementation of landscape improvement works where appropriate
- Ensure the existing disused cattle market is redeveloped
- To work with relevant partners to improve the public realm
- Realise the Burgage master plan to complete all phases of the proposed open space
- Ensure local planners use their influence to protect and enhance the Conservation Area
- Work with relevant partners to ensure more parking is available seven days a week and reintroduce the Road Warden Scheme to ensure illegal parking is controlled.
- To influence decision makers to consider a resolution to reduce speed and issues with heavy traffic through Burford and Tenbury
- Develop a rolling programme to address road maintenance issues
- Consideration to relocate the existing amenity facility from Palmer Meadow to a more appropriate site. Include a wider range of recycling facilities
- Reintroduce cardboard recycling facilities for Burford residents
- Ensure the town library opening hours and other services are maintained to meet the needs of the community
- Work with relevant bodies to ensure the local police force staffing is maintained.
- To ensure elected members at all levels of Local Government are well informed of local issues so that approved plans are realised.
- Local councils to involve young people in council businesses. A showdown council could be considered.
- To fully involve the community in consultation regarding issues that affects the future of the area.
- Work with relevant bodies to improve public transport links to local towns and cities
- Work with partners to enhance existing community transport scheme
- Work with planners to ensure the construction of affordable housing for young and local people is prioritised
- Priority should be given to brownfield sites for development rather than greenfield sites and avoid building on agricultural land
- Emphasis should be placed on the use of vacant and under used town centre properties
- Develop a central hub to improve the coordination of information and communication across Burford and Tenbury
- Develop a coherent process for better joined up working between neighbouring counties (Herefordshire and Shropshire) to ensure local initiatives come to fruition
- Work with relevant partners to greatly improve access to high speed Broadband

- To revisit the business case for a Health and Wellbeing Multi-use facility hosting sport, education, training and childcare provision in one hub
- Ensure the existing youth café continues to provide a regular and diverse range of activities and services to the youth of Burford, Tenbury and surrounding area

Clee Hill Parish Plan (2005)

The following have been taken from the Clee Hill Parish Plan as identified community needs and priorities:

- Increased police presence
- Affordable housing and retention of young people
- Parking
- Pedestrian crossings
- Facilities for young people
- Protection of the local environment and local character
- Litter and dog fouling
- Vehicle speeds

Onibury

No Parish Plan currently exists

Local Joint Committee

Burford is located within the Cleobury and Rural Local Joint Committee Area. The following needs and priorities have been raised by the local community as part of Local Joint Committee meetings:

Cleobury and Rural Local Joint Committee

- Road safety, speeding and HGVs
- Youth opportunities and facilities
- Police and community safety
- Housing needs
- Flooding
- Highways
- Waste
- Health care provision (especially a new doctors surgery)
- The local economy, broadband and tourism

Clee Hill is located within the Ludlow and Clee Local Joint Committee Area. The following needs and priorities have been raised by the local community as part of Local Joint Committee meetings:

Ludlow and Clee Local Joint Committee

- Road safety, speeding and HGVs
- Rural transport and parking
- Youth opportunities and facilities
- Police and community safety

- Streetscene and litter
- Ludlow town bus routes
- Local health care provision (New Ludlow hospital)

Onibury is located within the Cravens Arms and Rural Local Joint Committee Area. The following needs and priorities have been raised by the local community as part of Local Joint Committee meetings:

Craven Arms and Rural Local Joint Committee

The following needs and priorities have been raised by the local community as part of Craven Arms and Rural Local Joint Committee meetings:

- Rural transport and parking
- Police and community safety
- Flooding
- Highways
- Health provision

Other Consultations

Local Development Framework Site Allocations and Management of Development DPD (SAMDev) – Issues and Options (April- June 2010)

Caynham Parish Council representations on the SAMDev for Clee Hill

(Representation reference no SAMDEV DPD/04IOP/002337/00001)

- A larger school
- Additional car parking
- Aesthetic improvements

Onibury Parish Council representations on the SAMDev

(Representation reference no SAMDEV DPD/04IOP/002420/00001)

- A49 crossing/ underpass
- Central community space

Burford Community Toolkit Event – 22nd November 2011

The following activities, facilities, services and infrastructure were considered to be the most important community assets by the event attendees:

Activities:

- Youth groups and clubs
- Sports activities
- Children and family activities

Facilities:

- Parking
- Youth pod or shelter
- School

Services:

- Healthcare
- Shops
- Police/emergency services

Infrastructure:

- Job opportunities
- Broadband speed and connectivity
- Housing opportunities

Full information and feedback from the Burford Toolkit event is available at:
(<http://www.shropshire.gov.uk/factsfigures.nsf/open/C6BE79E370240015802577760045C7C5>)

3.4 INFRASTRUCTURE AND INVESTMENT DELIVERY FRAMEWORK FOR COMMUNITY HUBS IN THE LUDLOW AREA

Burford (This covers Burford settlement but excludes the rest of the Parish, which is covered by the Rural Hinterland section (see page 92))

Infrastructure or investment requirements and opportunities	Critical Priority or Key	Lead delivery partner	Other partners	Cost	Funding secured	Funding gap	Timescale for delivery	Potential funding sources	Notes
Housing and cohesive, sustainable communities									
Economic investment and opportunity									
Facilitation of ICT /broadband technologies	KEY	Shropshire Council A private sector delivery partner will be procured using the BDUK framework	BDUK Town and Parish Councils		£16.4 million across all of Shropshire (£8.2 Shropshire Council and £8.2 million from BDUK)		2015		The Connecting Shropshire aims to provide a minimum of 2 Mbps to all of Shropshire and as much superfast broadband as possible. The project will deliver to those communities that are not going to get either basic broadband or superfast broadband under the private sector rollout.
Social and community infrastructure									
Improved community facilities	KEY	Burford Parish Council, Shropshire Council (Leisure Services)							The Parish Council has identified the need to investigate options regarding recreational facilities including using the river for leisure activities

Review of primary school places to ensure sufficient provision	PRIORITY	Shropshire Council (Learning and Skills)	Developers	Dependent upon extent and location of development	None	To be determined through SAMDev	Dependent upon developers' timescales	Developer contributions, LA Capital Programme	An assessment of the effect on school places locally has been made based on revised levels of development with delivery spread evenly over the Plan period. Any requirements will be determined through SAMDev, based on need. Some surplus capacity does exist, but improvements/expansion of existing facilities may be required dependent on SAMDev
Review of secondary school places to ensure sufficient provision.	PRIORITY	Shropshire Council (Learning and Skills)	Developers	Dependent upon extent and location of development	None	To be determined through SAMDev	Dependent upon developer's timescales	Developer contributions, LA Capital Programme	To be determined through SAMDev, based on need. Some surplus capacity does exist, but improvements/expansion of existing facilities may be required dependent on SAMDev
Environment and Climate Changes									
Upgrade Waste Water Treatment Works	CRITICAL	Severn Trent Water	Environment Agency						An assessment of the effect on the WWTW has been made based on revised levels of development with delivery spread evenly over the Plan period. Whilst there is significant spare hydraulic capacity, there are also no known physical constraints that would prevent additional capacity being provided at the works.
Upgrade sewer network	CRITICAL	Severn Trent Water	Developers				The sewer network is currently	Options are currently being appraised by	An assessment of the effect on the sewer network has been made

							being reviewed by Severn Trent Water and will continue to be reviewed every 6 months as part of the water company's sewer network plans to allow issues to be addressed in a timely manner	Severn Trent Water as part of their capital investment programme.	based on revised levels of development with delivery spread evenly over the Plan period. There are no known records of sewer flooding in Burford. It is considered that the small scale development proposed will not cause any capacity issues.
Improvements to the streetscene	KEY	Council, Shropshire Council							The Parish Council has expressed a desire to introduce flowering shrubs/ signage, interpretation boards and picnic sites. In addition to further seating
Transport and accessibility									
Improved bus services	KEY	Public Transport Providers	Burford Parish Council/ Shropshire Council						The Parish Council have identified the need for improved bus services to Shropshire, Worcestershire and Herefordshire.

Clee Hill (This covers Clee Hill settlement but excludes the rest of the Parish, which is covered by the Rural Hinterland section (see page 93))

Infrastructure or investment requirements and opportunities	Critical Priority or Key	Lead delivery partner	Other partners	Cost	Funding secured	Funding gap	Timescale for delivery	Potential funding sources	Notes
---	--------------------------	-----------------------	----------------	------	-----------------	-------------	------------------------	---------------------------	-------

Infrastructure or investment requirements and opportunities	Critical Priority or Key	Lead delivery partner	Other partners	Cost	Funding secured	Funding gap	Timescale for delivery	Potential funding sources	Notes
Housing and cohesive, sustainable communities									
Affordable Housing Provision	PRIORITY	Shropshire Council	Caynham Parish Council						The Parish Council support the development of affordable housing for local people where there is proven need.
Economic investment and opportunity									
Facilitation of ICT /broadband technologies	KEY	Shropshire Council A private sector delivery partner will be procured using the BDUK framework	BDUK Town and Parish Councils		£16.4 million across all of Shropshire (£8.2 Shropshire Council and £8.2 million from BDUK)		2015		<p>The Connecting Shropshire aims to provide a minimum of 2 Mbps to all of Shropshire and as much superfast broadband as possible.</p> <p>The project will deliver to those communities that are not going to get either basic broadband or superfast broadband under the private sector rollout.</p>
Social and community infrastructure									
Increased Police Presence	KEY	West Mercia Police	Caynham Parish Council				2011-2012	West Mercia Police	<p>The Parish Council has identified the need for greater Police presence within the Parish.</p> <p>The Ludlow Rural Local Policing Team will work with the Parish Council to address this issue.</p>
Review of primary school places to ensure sufficient	PRIORITY	Shropshire Council	Developers	Dependent upon extent and location	None	To be determined through	Dependent upon developers'	Developer contributions, LA Capital	An assessment of the effect on school places locally has been made based on revised levels

Infrastructure or investment requirements and opportunities	Critical Priority or Key	Lead delivery partner	Other partners	Cost	Funding secured	Funding gap	Timescale for delivery	Potential funding sources	Notes
provision		(Learning and Skills)		of development		SAMDev	timescales	Programme	of development with delivery spread evenly over the Plan period. Any requirements will be determined through SAMDev, based on need. Some surplus capacity does exist, but improvements/ expansion of existing facilities may be required, dependent on SAMDev allocations.
Review of secondary school places to ensure sufficient provision.	PRIORITY	Shropshire Council (Learning and Skills)	Developers	Dependent upon extent and location of development	None	To be determined through SAMDev	Dependent upon developer's timescales	Developer contributions, LA Capital Programme	To be determined through SAMDev, based on need. Some surplus capacity does exist, but improvements/ expansion of existing facilities may be required, dependent on SAMDev allocations.
Establishment of a Neighbourhood Watch Scheme	KEY	Caynham Parish Council	West Mercia Police				2011-2012		The Parish Council support the establishment of a Neighbourhood Watch Scheme in the Parish. The Ludlow Rural Local Policing Team will work with the Parish Council to set this up.
Environment and climate change									
Upgrade Waste Water Treatment Works	CRITICAL	Severn Trent Water	Environment Agency	N/A	N/A	N/A			An assessment of the effect on the WWTW has been made based on revised levels of

Infrastructure or investment requirements and opportunities	Critical Priority or Key	Lead delivery partner	Other partners	Cost	Funding secured	Funding gap	Timescale for delivery	Potential funding sources	Notes
									development with delivery spread evenly over the Plan period. Whilst there is no known spare hydraulic capacity at the works, there are no known physical constraints that would prevent additional capacity being provided at the works. The timing of delivery will be taken into account as part of a phasing policy within SAMDev.
Upgrade sewer network	CRITICAL	Severn Trent Water	Developers	N/A	N/A	N/A	The sewer network is currently being reviewed by Severn Trent Water and will continue to be reviewed every 6 months as part of the water company's sewer network plans to allow issues to be addressed in a timely manner	Options are currently being appraised by Severn Trent Water as part of their capital investment programme.	An assessment of the effect on the sewer network has been made based on revised levels of development with delivery spread evenly over the Plan period. There are no records of flooding in Clee Hill. It is considered, that the small scale development proposed is unlikely to cause capacity issues , dependent on the location of development.
Improvements to the streetscene	KEY	Caynham Parish Council	Shropshire Council (Waste Management)						The Parish Council has identified the need to monitor litter and dog mess in village.

Infrastructure or investment requirements and opportunities	Critical Priority or Key	Lead delivery partner	Other partners	Cost	Funding secured	Funding gap	Timescale for delivery	Potential funding sources	Notes
Transport and accessibility									
Develop and improve cycle and pedestrian facilities	KEY			c£60,000	None	c£60,000	Aspirational	Developer contributions	The Parish Council have identified the need to: <ul style="list-style-type: none"> Consider the provision of a pelican crossing in the High Street
The provision of a pelican crossing in the High Street and road safety improvements by the school in Tenbury Road.	PRIORITY	Shropshire Council (Highways)	Caynham Parish Council			Unknown	Ongoing	Developer contributions	The Parish Council have identified the provision of a pelican crossing and road safety improvements as a local priority
The resurfacing of the remaining area of the car park in Clee Hill	PRIORITY	Shropshire Council (Highways)	Caynham Parish Council			Unknown	Ongoing	Developer contributions	The Parish Council have identified the resurfacing of the remaining area of the car park in Clee Hill as a local priority

Infrastructure or investment requirements and opportunities	Critical Priority or Key	Lead delivery partner	Other partners	Cost	Funding secured	Funding gap	Timescale for delivery	Potential funding sources	Notes
Local highway improvements, traffic management, parking provision and speed and safety enhancements	KEY	Caynham Parish Council, Shropshire Council (Highways)							<p>The Parish Council has identified the need to:</p> <ul style="list-style-type: none"> • Enforce the 30mph speed limit through the village of Clee Hill. • Review the current parking provision in the centre of the village and by the school in Tenbury Road. • Consider the resurfacing of the car park area in Clee Hill.

Onibury (This covers Onibury settlement but excludes the rest of the Parish, which is covered by the Rural Hinterland section (see page 103))

Infrastructure or investment requirements and opportunities	Critical Priority or Key	Lead delivery partner	Other partners	Cost	Funding secured	Funding gap	Timescale for delivery	Potential funding sources	Notes
Housing and cohesive, sustainable communities									
Economic investment and opportunity									
Facilitation of ICT /broadband technologies	KEY	Shropshire Council A private sector	BDUK Town and Parish Councils		£16.4 million across all of Shropshire (£8.2		2015		The Connecting Shropshire aims to provide a minimum of 2 Mbps to all of

Infrastructure or investment requirements and opportunities	Critical Priority or Key	Lead delivery partner	Other partners	Cost	Funding secured	Funding gap	Timescale for delivery	Potential funding sources	Notes
		delivery partner will be procured using the BDUK framework			Shropshire Council and £8.2 million from BDUK)				Shropshire and as much superfast broadband as possible. The project will deliver to those communities that are not going to get either basic broadband or superfast broadband under the private sector rollout.
Social and community infrastructure									
Review of primary school places to ensure sufficient provision	PRIORITY	Shropshire Council (Learning and Skills)	Developers	Dependent upon extent and location of development	None	To be determined through SAMDev	Dependent upon developers' timescales	Developer contributions, LA Capital Programme	An assessment of the effect on school places locally has been made based on revised levels of development with delivery spread evenly over the Plan period. Any requirements will be determined through SAMDev, based on need. Some surplus capacity does exist and should be sufficient to cater for allocations through SAMDev
Review of secondary school places to ensure sufficient provision.	PRIORITY	Shropshire Council (Learning and Skills)	Developers	Dependent upon extent and location of development	None	To be determined through SAMDev	Dependent upon developer's timescales	Developer contributions, LA Capital Programme	To be determined through SAMDev, based on need. Some surplus capacity does exist, but improvements/ expansion of existing facilities may be required, dependent on SAMDev allocations.
Environment and climate change									

Infrastructure or investment requirements and opportunities	Critical Priority or Key	Lead delivery partner	Other partners	Cost	Funding secured	Funding gap	Timescale for delivery	Potential funding sources	Notes
Upgrade Waste Water Treatment Works for Onibury Wood Yard	CRITICAL	Severn Trent Water	Environment Agency						An assessment of the effect on the sewer network has been made based on revised levels of development with delivery spread evenly over the Plan period. The WWTW has existing spare capacity for approx. 19 additional dwellings. In addition, there are no known physical constraints that would prevent additional capacity being provided at the works. The timing of delivery will be taken into account as part of a phasing policy within SAMDev.
Upgrade Waste Water Treatment Works for Onibury Church Close	CRITICAL	Severn Trent Water	Environment Agency						An assessment of the effect on the sewer network has been made based on revised levels of development with delivery spread evenly over the Plan period. Whilst there is no known hydraulic spare capacity at the works, there are no known physical constraints that would prevent additional capacity being provided at the treatment works.
Upgrade sewer network	CRITICAL	Severn Trent Water	Developers	N/A	N/A	N/A	The sewer network is currently being	Options are currently being appraised by	An assessment of the effect on the sewer network has been made

Infrastructure or investment requirements and opportunities	Critical Priority or Key	Lead delivery partner	Other partners	Cost	Funding secured	Funding gap	Timescale for delivery	Potential funding sources	Notes
							reviewed by Severn Trent Water and will continue to be reviewed every 6 months as part of the water company's sewer network plans to allow issues to be addressed in a timely manner	Severn Trent Water as part of their capital investment programme.	based on revised levels of development with delivery spread evenly over the Plan period. There are no records of flooding in Onibury. The foul sewers are small due to the size of the village and additional dwellings may therefore have an impact on sewerage infrastructure, dependent on the location of development. hydraulic modelling should be undertaken once the location of development is confirmed in SAMDev.
Provision of natural and semi natural open space	PRIORITY	Shropshire Council (Community Services- Culture and Leisure)		c£274 per dwelling x 20 years maintenance			Ongoing	Developer contributions	The PPG17 study has identified a current under provision of natural and semi natural open space.
Transport and accessibility									

4. COMMUNITY CLUSTERS PLACE PLAN FOR THE LUDLOW AREA

4.1 VISION FOR COMMUNITY CLUSTERS

The vision for *Community Clusters* is found in the Core Strategy Policy CS4, and is as follows:

Community Clusters are comprised of two or more smaller settlements, where the combined settlements offer a range of services contributing to a sustainable community. Community Clusters will have development that helps to rebalance rural communities by providing facilities, economic development or housing for local needs that is of a scale appropriate to the settlement.

Core Strategy Policy CS4

Within the Ludlow area, no settlements have currently been put forward by the local community (via parish councils) as Community Clusters. All of the surrounding area around Ludlow and outside of the identified Community Hubs, is therefore defined as countryside (Rural Hinterland), where further development will be strictly controlled and only allowed in exceptional circumstances. The Council will, however, continue to work with the local community to identify the community benefits that can be delivered through development and there is an ongoing opportunity for communities to 'opt in' as either a Hub or Cluster, at a later stage in the Local Development Framework Plan period (2006-2026), for example through a review of local parish plans.

5. LUDLOW'S RURAL HINTERLAND PLACE PLAN

5.1 VISION FOR RURAL HINTERLAND

The vision for the *Rural Hinterland* is found in the Core Strategy Policy CS5, and is as follows:

New development will be strictly controlled in accordance with national planning policies protecting the countryside and Green Belt. Subject to further controls over development that apply to the Green Belt, development proposals on appropriate sites which maintain and enhance countryside vitality and character will be permitted where they improve the sustainability of rural communities by bringing local economic and community benefits.
Core Strategy Policy CS5

Within the Ludlow locality, all areas outside Ludlow Town and the identified Community Hubs are part of the Rural Hinterland.

5.2 PROFILE OF THE RURAL HINTERLAND IN THE LUDLOW AREA

5.3 COMMUNITY LED PLANNING IN LUDLOW'S RURAL HINTERLAND

Community Led Plans

Ashford Carbonell Parish Plan (2003)

The following have been taken from the Ashford Carbonell Parish Plan as identified community needs and priorities:

- Maintenance of public areas
- No further housing development
- Transport and village traffic, particularly speed
- Parking near school
- Dog fouling
- The Village Hall
- The Parish Church
- A green Parish
- Street scene
- Sports and playground facilities
- The village school

Bitterley Parish Plan (2008)

The following have been taken from the Bitterley Parish Plan as identified community needs and priorities:

- Transport
- Road safety
- The environment
- Housing
- Health
- Leisure
- Activities for young people, particularly post 14's
- Crime and Police presence
- Transport including speeding traffic
- Street scene improvements
- Adult education and recreation classes
- Shopping
- Free view
- Broadband
- Maintenance of roads and footpaths

Burford and Tenbury Parish Plan (2004) and Burford and Tenbury Parish Plan (2012)

- Refer to page 57

Caynham Parish Plan (2005)

The following have been taken from the Caynham Parish Plan as identified community needs and priorities:

- Housing/development
- Transport, road safety and speeding
- HGV
- Parking
- Litter
- Dog fouling
- Recycling
- Footpaths
- Services and facilities
- Shopping
- Social activities
- Mains sewage and gas supply
- Facilities/activities for young people
- Community safety
- Environment

Clee Hill Parish Plan (2005)

- Refer to page 58

Knowbury Parish Plan (2005)

The following have been taken from the Knowbury Parish Plan as identified community needs and priorities:

- Affordable housing
- Speeding
- Road maintenance
- Recycling

- Litter and dog fouling
- Facilities for young people

Ludford Village Plan (2004)

The following have been taken from the Ludford Village Plan as identified community needs and priorities:

- Local issues including housing and planning
- Transport and traffic including speed
- Street lighting
- Protect the rural character including supporting the conservation and preservation along the River Teme and Whitcliffe Common
- Shopping facilities
- Waste collection services
- Health care provision

Ludford Village Plan update 2011

- Ensure that parking policies do not penalise people in the Ludlow catchment area in terms of being able to access local shops
- Extend the Whitcliffe Bread walk to Ludford Bridge
- Footbridge over the A49
- Seek to extend the Conservation Area around the southern boundary of the town
- Seek to protect the rural character of Ludford Parish, including concentrating development in the area north of The Sheet and south from Rocks Green
- Introduction of a weight limit on Ludford Bridge to improve safety and conserve the built and natural environment.
- Erect speed warning signs in Rocks Green and The Sheet
- The construction of a footpath from Rocks Green to the Eco-Park, The Sheet Ludlow

Ludlow Future: Ludlow's Plan for 2010-2015

- Refer to page 8

Clee Hill Parish Plan (2005)

The following have been taken from the Clee Hill Parish Plan as identified community needs and priorities:

- Increased police presence
- Affordable housing and retention of young people
- Parking
- Pedestrian crossings
- Facilities for young people
- Protection of the local environment and local character
- Litter and dog fouling
- Vehicle speeds

Ashford Bowdler

No Parish Plan currently exists

Bromfield

No Parish Plan currently exists

Greete

No Parish Plan currently exists

Hope Bagot

No Parish Plan currently exists

Hopton Cangeford and Stoke St Milborough

The Parish Council are in the process of commencing a Parish Plan. Further information will be available in due course.

Onibury

No Parish Plan currently exists

Richards Castle

A Parish Plan steering group has been established and questionnaires have been distributed, further updates will be provided in due course.

Stanton Lacy

The Parish Council are in the process of initiating a Parish Plan. Further information will be available in due course.

Whitton

No Parish Plan currently exists

Local Joint Committee

Bromfield, Clee Hill Ludford, Ludlow, Ashford Carbonell, Richards Castle, Greete, Whitton, Caynham, Hope Baggot and Bitterley are located within the Ludlow and Clee Local Joint Committee Area. The following needs and priorities have been raised by the local community as part of Local Joint Committee meetings:

Ludlow and Clee Local Joint Committee

- Road safety, speeding and HGVs
- Rural transport and parking
- Youth opportunities and facilities
- Police and community safety
- Streetscene and litter
- Ludlow town bus routes
- Local health care provision (New Ludlow hospital)

Stanton Lacy, Onibury and Hopton Cangeford are located within the Cravens Arms and Rural Local Joint Committee Area. The following needs and priorities have been raised by the local community as part of Local Joint Committee meetings:

Craven Arms and Rural Local Joint Committee

The following needs and priorities have been raised by the local community as part of Craven Arms and Rural Local Joint Committee meetings:

- Rural transport and parking
- Police and community safety
- Flooding
- Highways
- Health provision

Burford is located within the Cleobury and Rural Local Joint Committee Area.

- Refer to page 58

Other Consultations

Local Development Framework Core Strategy- Issues and Options Consultation (January- March 2009)

Ashford Carbonel Parish Council representations on the Core Strategy
(Representation reference no CORESTRATEGY002310/00001/001)

- Core industry is essential to provide work to keep younger people in the community

Ludford Parish Council representation on the Core Strategy

(Representation reference no CORESTRATEGY002397/00001/002)

- Need for a comprehensive plan for the area which provides a mix between industrial development, social development such as a new hospital and appropriate housing which blends into the rural countryside.

Local Development Framework Core Strategy – Policy Directions Consultation (August-October 2009)

Ludlow Town Council representations on the Core Strategy

(Representation reference no CORE STRATEGY06264/00001/007)

- Refer to page 10

Local Development Framework Core Strategy – Final Plan Publication (January-March 2010)

Bitterley Parish Council representations on the Core Strategy.

(Representation reference no CORE STRATEGY/09RSUB/002326/00001/001)

- Allowance of only affordable housing to meet local need be made more flexible to allow for a mix of affordable and market housing that better reflects the variety of local needs identified.
- Parish Plan that should be acknowledged in regard of identifying local need

Ludford Parish Council representations on the Core Strategy.

(Representation reference no CORE STRATEGY/09RSUB/002397/00002/001)

- Concern that the Core Strategy will still enable ad hoc developments without regard to considering a detailed impact assessment of the required infrastructure both in terms of transport, impact to road users, housing, schools etc particularly if driven by other timescales and Central Government Funding.

Ludlow Town Council representations on the Core Strategy

(Representation reference no CORE STRATEGY/09RSUB/06264/00002/001)

- Refer to page 10

Local Development Framework Site Allocations and Management of Development DPD (SAMDev) – Issues and Options Consultation (April- June 2010)

Bitterley Parish Council representations on the SAMDev

(Representation reference no SAMDEV DPD/04IOP/002326/00002)

- There is a need for a bus shelter
- Modest housing development to include market housing as well as affordable
- Population needs to stay stable or rise to sustain school numbers
- Drains and flooding issues
- Bigger school at Clee Hill

Caynham Parish Council representations on the SAMDev for Clee Hill

(Representation reference no SAMDEV DPD/04IOP/002337/00001)

- Refer to page 59

Onibury Parish Council representations on the SAMDev

(Representation reference no SAMDEV DPD/04IOP/002420/00001)

- Refer to page 59

Richards Castle Parish Council representations on the SAMDev

(Representation reference no SAMDEV DPD/04IOP/06771/00001)

- Improve road junction at Policemans Corner
- Develop stronger links with Orleton

Malvern Hills District Council representations on the SAMDev for Burford

(Representation reference no SAMDEV DPD/04IOP/002669/00002)

- Improve travel safety for pedestrians, cyclists and motor vehicles between Tenbury and Burford by undertaking bridge structure and carriageway alterations to Teme Bridge.

Ludford Parish Council representations on the SAMDev for Ludford and Ludlow

(Representation reference no SAMDEV DPD/04IOP/002397/00003)

To overcome major traffic problems if significant development took place in Ludford area would require:

- A new river crossing of the River Teme, leading into Old Street or wherever, with two traffic lanes.
- A roundabout on the A49 junction with B4361
- A roundabout at the Cattle Market entrance with B4361.
- Improvement to the junctions at Policeman's Corner and Lower Barns Road, which both rely on mirrors for access to the B4361.
- Schools, bus routes, leisure facilities, car parking, medical and dental practices and social services that would require expansion and development. It is also the less visible services that would be inadequate. The water supply and sewage systems, recycling and refuse disposal and difficulties regarding mobile phone reception all require attention.

Ludlow Town Council representations on the SAMDev

(Representation reference no SAMDEV DPD/04IOP/002398/00003)

- Refer to page 11

Investing in Shropshire's Future- Local Infrastructure and Investment Workshop with Ludlow Town Council (20th September 2010)

- Refer to page 11

Burford Community Toolkit Event – 22nd November 2011

- Refer to page 59

Caynham Community Toolkit Event – 18th March 2010

The following activities, facilities, services and infrastructure were considered to be the most important community assets by the event attendees:

Activities:

- Senior citizens groups and clubs
- Youth groups and clubs
- Children and family activities
- Sports activities

Facilities:

- Community centre/village hall
- Café/pub/restaurant
- Open spaces and play areas
- Post box

Services:

- Post office services
- Healthcare
- Shops

Infrastructure:

- Broadband speed and connectivity
- Tourism and heritage infrastructure
- Road improvements

Full information and feedback from the Caynham Toolkit event is available at:

<http://www.shropshire.gov.uk/factsfigures.nsf/open/C6BE79E370240015802577760045C7C5>

Ludlow Community Toolkit Event – 19th October 2010

- Refer to page 12

5.4 INFRASTRUCTURE AND INVESTMENT DELIVERY FRAMEWORK FOR LUDLOW'S RURAL HINTERLAND

Ashford Bowdler

Infrastructure or investment requirements and opportunities	Critical Priority or Key	Lead delivery partner	Other partners	Cost	Funding secured	Funding gap	Timescale for delivery	Potential funding sources	Notes
Housing and cohesive, sustainable communities									
Economic investment and opportunity									
Facilitation of ICT /broadband technologies	KEY	Shropshire Council A private sector delivery partner will be procured using the BDUK framework	BDUK Town and Parish Councils		£16.4 million across all of Shropshire (£8.2 Shropshire Council and £8.2 million from BDUK)		2015		<p>The Connecting Shropshire aims to provide a minimum of 2 Mbps to all of Shropshire and as much superfast broadband as possible.</p> <p>The project will deliver to those communities that are not going to get either basic broadband or superfast broadband under the private sector rollout.</p>
Social and community infrastructure									

Infrastructure or investment requirements and opportunities	Critical Priority or Key	Lead delivery partner	Other partners	Cost	Funding secured	Funding gap	Timescale for delivery	Potential funding sources	Notes
Environment and climate change									
Transport and accessibility									

Ashford Carbonell

Infrastructure or investment requirements and opportunities	Critical Priority or Key	Lead delivery partner	Other partners	Cost	Funding secured	Funding gap	Timescale for delivery	Potential funding sources	Notes
Housing and cohesive, sustainable communities									
Economic investment and opportunity									
Facilitation of ICT /broadband technologies	KEY	Shropshire Council A private sector delivery partner will be procured using the	BDUK Town and Parish Councils		£16.4 million across all of Shropshire (£8.2 Shropshire Council and £8.2 million from BDUK)		2015		The Connecting Shropshire aims to provide a minimum of 2 Mbps to all of Shropshire and as much superfast broadband as possible. The project will deliver

Infrastructure or investment requirements and opportunities	Critical Priority or Key	Lead delivery partner	Other partners	Cost	Funding secured	Funding gap	Timescale for delivery	Potential funding sources	Notes
		BDUK framework							to those communities that are not going to get either basic broadband or superfast broadband under the private sector rollout.
Social and community infrastructure									
Heritage of the Church	KEY	Church, Ashford Carbonell Parish Council						Developer contributions	The Parish Council has identified the need for the fabric of the church and its surroundings to be maintained
Improvements to the Village Hall	KEY	Ashford Carbonell Parish Council						Developer contributions	<p>The Parish Council has identified the need a flexible up to date Village Hall including:</p> <ul style="list-style-type: none"> • A larger function area • A small committee room • A bar area • Indoor games facilities • Better acoustics • Better car park lighting • Better storage

Infrastructure or investment requirements and opportunities	Critical Priority or Key	Lead delivery partner	Other partners	Cost	Funding secured	Funding gap	Timescale for delivery	Potential funding sources	Notes
									facilities <ul style="list-style-type: none"> • Secure Post Office facilities • On-going maintenance • Better and larger kitchen facilities • Upgraded sports field facilities • Upgraded playground facilities
Environment and climate change									
Improvements to the streetscene	KEY	Ashford Carbonell Parish Council	Shropshire Council						The Parish Council has identified the need for tree planting around the recreation field and other areas. In addition to wild flowers and nesting boxes
Improved recycling facilities	KEY	Ashford Carbonell Parish Council	Shropshire Council (Waste Management)					Developer contributions	The Parish Council has identified the need for better recycling facilities.
Transport and accessibility									

Infrastructure or investment requirements and opportunities	Critical Priority or Key	Lead delivery partner	Other partners	Cost	Funding secured	Funding gap	Timescale for delivery	Potential funding sources	Notes

Bitterley

Infrastructure or investment requirements and opportunities	Critical Priority or Key	Lead delivery partner	Other partners	Cost	Funding secured	Funding gap	Timescale for delivery	Potential funding sources	Notes
Housing and cohesive, sustainable communities									
Economic investment and opportunity									
Facilitation of ICT /broadband technologies	KEY	Shropshire Council A private sector delivery partner will be procured using the BDUK framework	BDUK Town and Parish Councils		£16.4 million across all of Shropshire (£8.2 Shropshire Council and £8.2 million from BDUK)		2015		<p>The Connecting Shropshire aims to provide a minimum of 2 Mbps to all of Shropshire and as much superfast broadband as possible.</p> <p>The project will deliver to those communities that are not going to get either basic broadband or superfast broadband under the private sector</p>

Infrastructure or investment requirements and opportunities	Critical Priority or Key	Lead delivery partner	Other partners	Cost	Funding secured	Funding gap	Timescale for delivery	Potential funding sources	Notes
									<p>rollout.</p> <p>The Parish Council has identified the need for improved broadband provision within the Parish.</p> <p>British Waterways suggests that for waterways with a towpath, this could provide a secure, flat and easily accessed route for broadband.</p>
Social and community infrastructure									
Provision for young people	KEY	Bitterley Parish Council, Shropshire Council							<p>The Parish Council has identified the need for more activities for the young. Including:</p> <ul style="list-style-type: none"> • Provision of a youth club for 7-10 year olds and 14+ • Setting up a car sharing scheme for outside activities • Creating a cycle

Infrastructure or investment requirements and opportunities	Critical Priority or Key	Lead delivery partner	Other partners	Cost	Funding secured	Funding gap	Timescale for delivery	Potential funding sources	Notes
									path <ul style="list-style-type: none"> Investigate open space and/or creating supervision for the school field to provide an area for outdoor games.
Improved Community Facilities	KEY	Bitterley Parish Council							The Parish Council support the establishment of a voluntary car sharing scheme, bringing more services (namely health) into the Parish using community facilities such as the Village Hall and a good neighbour scheme.
Increased Police Presence	KEY	West Mercia Police	Bitterley Parish Council				2011-2012	West Mercia Police	The Parish Council has identified the need for greater Police presence within the Parish. The Ludlow Rural Local Policing Team will work with the Parish Council to address this issue.

Infrastructure or investment requirements and opportunities	Critical Priority or Key	Lead delivery partner	Other partners	Cost	Funding secured	Funding gap	Timescale for delivery	Potential funding sources	Notes
Provision of Digital TV	KEY		Bitterley Parish Council, Shropshire Council						The Parish Council has identified the need for access to Freeview in the Parish.
Environment and climate change									
Flooding on the roads in Bitterley	KEY	Bitterley Parish Council, Landpwners, Shropshire Council							The Parish Council has identified a problem with flooding of the roads in Bitterley due to the drains being too narrow or not cleared frequently enough.
Transport and accessibility									
Develop and improve the cycle and pedestrian network	KEY	Bitterley Parish Council, Shropshire Council							The Parish Council has identified the need for improved maintenance of footpaths.
Improved parking at the school	KEY	Bitterley Parish Council	Shropshire Council (Highways)						The Parish Council has identified the need for improved parking at the school and suggested that current parking (three spaces) by Orchard Lee could be deepened to accommodate up to eight cars.

Infrastructure or investment requirements and opportunities	Critical Priority or Key	Lead delivery partner	Other partners	Cost	Funding secured	Funding gap	Timescale for delivery	Potential funding sources	Notes
Local highway improvements, traffic management, parking provision and speed and safety enhancements	KEY	Bitterley Parish Council/ Shropshire Council (Highways)							The Parish Council has identified the need for speeding traffic to be addressed at Angel Bank and Middleton and suggested that a speed reduction be introduced on the main road between Henley and Clee Hill. They have also stated that the lack of footpath in Middleton is problematic

Bromfield

Infrastructure or investment requirements and opportunities	Critical Priority or Key	Lead delivery partner	Other partners	Cost	Funding secured	Funding gap	Timescale for delivery	Potential funding sources	Notes
Housing and cohesive, sustainable communities									
Economic investment and opportunity									

Infrastructure or investment requirements and opportunities	Critical Priority or Key	Lead delivery partner	Other partners	Cost	Funding secured	Funding gap	Timescale for delivery	Potential funding sources	Notes
Facilitation of ICT /broadband technologies	KEY	Shropshire Council A private sector delivery partner will be procured using the BDUK framework	BDUK Town and Parish Councils		£16.4 million across all of Shropshire (£8.2 Shropshire Council and £8.2 million from BDUK)		2015		<p>The Connecting Shropshire aims to provide a minimum of 2 Mbps to all of Shropshire and as much superfast broadband as possible.</p> <p>The project will deliver to those communities that are not going to get either basic broadband or superfast broadband under the private sector rollout.</p>
Social and community infrastructure									
Environment and climate change									
Transport and accessibility									

Burford (This covers the entire Parish but excludes the Community Hub settlement (see page 63) in the Parish

Infrastructure or investment requirements and opportunities	Critical Priority or Key	Lead delivery partner	Other partners	Cost	Funding secured	Funding gap	Timescale for delivery	Potential funding sources	Notes
Housing and cohesive, sustainable communities									
Economic investment and opportunity									
Facilitation of ICT /broadband technologies	KEY	Shropshire Council A private sector delivery partner will be procured using the BDUK framework	BDUK Town and Parish Councils		£16.4 million across all of Shropshire (£8.2 Shropshire Council and £8.2 million from BDUK)		2015		The Connecting Shropshire aims to provide a minimum of 2 Mbps to all of Shropshire and as much superfast broadband as possible. The project will deliver to those communities that are not going to get either basic broadband or superfast broadband under the private sector rollout.
Social and community infrastructure									
Environment and climate change									
Transport and accessibility									

Infrastructure or investment requirements and opportunities	Critical Priority or Key	Lead delivery partner	Other partners	Cost	Funding secured	Funding gap	Timescale for delivery	Potential funding sources	Notes

Caynham (This covers the entire Parish but excludes the Community Hub settlement (see page 65) in the Parish

Infrastructure or investment requirements and opportunities	Critical Priority or Key	Lead delivery partner	Other partners	Cost	Funding secured	Funding gap	Timescale for delivery	Potential funding sources	Notes
Housing and cohesive, sustainable communities									
Affordable housing provision	PRIORITY	Shropshire Council	Caynham Parish Council						The Parish Council has identified the need for limited small scale development of affordable housing for local people.
Economic investment and opportunity									
Facilitation of ICT /broadband technologies	KEY	Shropshire Council A private sector delivery partner will be procured using the	BDUK Town and Parish Councils		£16.4 million across all of Shropshire (£8.2 Shropshire Council and £8.2 million from BDUK)		2015		The Connecting Shropshire aims to provide a minimum of 2 Mbps to all of Shropshire and as much superfast broadband as possible. The project will deliver

Infrastructure or investment requirements and opportunities	Critical Priority or Key	Lead delivery partner	Other partners	Cost	Funding secured	Funding gap	Timescale for delivery	Potential funding sources	Notes
		BDUK framework							to those communities that are not going to get either basic broadband or superfast broadband under the private sector rollout.
Social and community infrastructure									
Environment and climate change									
Transport and accessibility									
Local highway improvements, traffic management, parking provision and speed and safety enhancements	KEY	Caynham Parish Council, Shropshire Council (Highways)							
Develop and improve the cycle and pedestrian network	KEY	Caynham Parish Council, Shropshire Council							The Parish Council wish to develop a leaflet/brochure giving details of footpaths and bridleways. They have also identified the need for the to re-route or reinstate footbridges

Greete

Infrastructure or investment requirements and opportunities	Critical Priority or Key	Lead delivery partner	Other partners	Cost	Funding secured	Funding gap	Timescale for delivery	Potential funding sources	Notes
Housing and cohesive, sustainable communities									
Economic investment and opportunity									
Facilitation of ICT /broadband technologies	KEY	Shropshire Council A private sector delivery partner will be procured using the BDUK framework	BDUK Town and Parish Councils		£16.4 million across all of Shropshire (£8.2 Shropshire Council and £8.2 million from BDUK)		2015		<p>The Connecting Shropshire aims to provide a minimum of 2 Mbps to all of Shropshire and as much superfast broadband as possible.</p> <p>The project will deliver to those communities that are not going to get either basic broadband or superfast broadband under the private sector rollout.</p>
Social and community infrastructure									
Environment and climate change									
Transport and accessibility									

Infrastructure or investment requirements and opportunities	Critical Priority or Key	Lead delivery partner	Other partners	Cost	Funding secured	Funding gap	Timescale for delivery	Potential funding sources	Notes

Hope Bagot

Infrastructure or investment requirements and opportunities	Critical Priority or Key	Lead delivery partner	Other partners	Cost	Funding secured	Funding gap	Timescale for delivery	Potential funding sources	Notes
Housing and cohesive, sustainable communities									
Economic investment and opportunity									
Facilitation of ICT /broadband technologies	KEY	Shropshire Council A private sector delivery partner will be procured using the BDUK framework	BDUK Town and Parish Councils		£16.4 million across all of Shropshire (£8.2 Shropshire Council and £8.2 million from BDUK)		2015		<p>The Connecting Shropshire aims to provide a minimum of 2 Mbps to all of Shropshire and as much superfast broadband as possible.</p> <p>The project will deliver to those communities that are not going to get either basic broadband or superfast broadband under the private sector</p>

Infrastructure or investment requirements and opportunities	Critical Priority or Key	Lead delivery partner	Other partners	Cost	Funding secured	Funding gap	Timescale for delivery	Potential funding sources	Notes
									rollout.
Social and community infrastructure									
Environment and climate change									
Transport and accessibility									

Hopton Cangeford

Infrastructure or investment requirements and opportunities	Critical Priority or Key	Lead delivery partner	Other partners	Cost	Funding secured	Funding gap	Timescale for delivery	Potential funding sources	Notes
Housing and cohesive, sustainable communities									
Economic investment and opportunity									
Facilitation of ICT /broadband technologies	KEY	Shropshire Council A private sector delivery	BDOUK Town and Parish Councils		£16.4 million across all of Shropshire (£8.2 Shropshire		2015		The Connecting Shropshire aims to provide a minimum of 2 Mbps to all of Shropshire and as much

Infrastructure or investment requirements and opportunities	Critical Priority or Key	Lead delivery partner	Other partners	Cost	Funding secured	Funding gap	Timescale for delivery	Potential funding sources	Notes
		partner will be procured using the BDUK framework			Council and £8.2 million from BDUK)				superfast broadband as possible. The project will deliver to those communities that are not going to get either basic broadband or superfast broadband under the private sector rollout.
Social and community infrastructure									
Environment and climate change									
Transport and accessibility									

Ludford

Infrastructure or investment requirements and opportunities	Critical Priority or Key	Lead delivery partner	Other partners	Cost	Funding secured	Funding gap	Timescale for delivery	Potential funding sources	Notes
Housing and cohesive, sustainable communities									

Infrastructure or investment requirements and opportunities	Critical Priority or Key	Lead delivery partner	Other partners	Cost	Funding secured	Funding gap	Timescale for delivery	Potential funding sources	Notes
Economic investment and opportunity									
Facilitation of ICT /broadband technologies	KEY	Shropshire Council A private sector delivery partner will be procured using the BDUK framework	BDUK Town and Parish Councils		£16.4 million across all of Shropshire (£8.2 Shropshire Council and £8.2 million from BDUK)		2015		<p>The Connecting Shropshire aims to provide a minimum of 2 Mbps to all of Shropshire and as much superfast broadband as possible.</p> <p>The project will deliver to those communities that are not going to get either basic broadband or superfast broadband under the private sector rollout.</p>
Social and community infrastructure									
Provision of open space	KEY	Ludford Parish Council, Shropshire Council							The Parish Council has identified the need to support the conservation and preservation of activities undertaken at Whitcliffe Common.
Environment and climate change									
Extension to the Conservation Area	KEY	Ludford Parish Council,							The Parish Council has identified the need to extend the conservation

Infrastructure or investment requirements and opportunities	Critical Priority or Key	Lead delivery partner	Other partners	Cost	Funding secured	Funding gap	Timescale for delivery	Potential funding sources	Notes
		Shropshire Council (Environment)							area around the southern boundary of the town.
Transport and accessibility									
Develop and improve the cycle and pedestrian network	KEY	Ludford Parish Council, Shropshire Council (Highways)							The Parish Council has identified the need for the development of an additional footpath along the River Teme. In particular, the Parish Council is in favour of extending the Whitcliffe Bread walk to Ludford Bridge. The Parish Council has also identified the need for construction of a footpath between Rocks Green and the Eco Park.

Infrastructure or investment requirements and opportunities	Critical Priority or Key	Lead delivery partner	Other partners	Cost	Funding secured	Funding gap	Timescale for delivery	Potential funding sources	Notes
Local highway improvements, traffic management, parking provision and speed and safety enhancements	KEY	Ludford Parish Council, Shropshire Council (Highways)							<p>The Parish Council has identified the need for:</p> <ul style="list-style-type: none"> • A weight limit on Ludford Bridge • Provision of a footbridge over the A49 • Speed warning signs in Rocks Green and The Sheet
Provision of a Park and Ride facility	KEY	Ludford Parish Council, Shropshire Council (Highways)							<p>The Parish Council has identified that the provision of a park and ride facility to/from Ludlow should be an important factor in determining future land use and makes the best use of transport resources as well as being environmentally beneficial</p>

Ludlow (This covers the entire Parish but excludes the Market Town settlement (see page 14) in the Parish)

Infrastructure or investment requirements and opportunities	Critical Priority or Key	Lead delivery partner	Other partners	Cost	Funding secured	Funding gap	Timescale for delivery	Potential funding sources	Notes
Housing and cohesive, sustainable communities									
Economic investment and opportunity									
Facilitation of ICT /broadband technologies	KEY	Shropshire Council A private sector delivery partner will be procured using the BDUK framework	BDUK Town and Parish Councils		£16.4 million across all of Shropshire (£8.2 Shropshire Council and £8.2 million from BDUK)		2015		<p>The Connecting Shropshire aims to provide a minimum of 2 Mbps to all of Shropshire and as much superfast broadband as possible.</p> <p>The project will deliver to those communities that are not going to get either basic broadband or superfast broadband under the private sector rollout.</p>
Social and community infrastructure									
Environment and climate change									
Transport and accessibility									

Infrastructure or investment requirements and opportunities	Critical Priority or Key	Lead delivery partner	Other partners	Cost	Funding secured	Funding gap	Timescale for delivery	Potential funding sources	Notes

Onibury (This covers the entire Parish but excludes the Community Hub settlement (see page 70) in the Parish

Infrastructure or investment requirements and opportunities	Critical Priority or Key	Lead delivery partner	Other partners	Cost	Funding secured	Funding gap	Timescale for delivery	Potential funding sources	Notes
Housing and cohesive, sustainable communities									
Economic investment and opportunity									
Facilitation of ICT /broadband technologies	KEY	Shropshire Council A private sector delivery partner will be procured using the BDUK framework	BDUK Town and Parish Councils		£16.4 million across all of Shropshire (£8.2 Shropshire Council and £8.2 million from BDUK)		2015		<p>The Connecting Shropshire aims to provide a minimum of 2 Mbps to all of Shropshire and as much superfast broadband as possible.</p> <p>The project will deliver to those communities that are not going to get either basic broadband or superfast broadband under the private sector</p>

Infrastructure or investment requirements and opportunities	Critical Priority or Key	Lead delivery partner	Other partners	Cost	Funding secured	Funding gap	Timescale for delivery	Potential funding sources	Notes
									rollout.
Social and community infrastructure									
Environment and climate change									
Transport and accessibility									

Richards Castle

Infrastructure or investment requirements and opportunities	Critical Priority or Key	Lead delivery partner	Other partners	Cost	Funding secured	Funding gap	Timescale for delivery	Potential funding sources	Notes
Housing and cohesive, sustainable communities									
Economic investment and opportunity									
Facilitation of ICT /broadband technologies	KEY	Shropshire Council A private sector delivery partner will	BDOUK Town and Parish Councils		£16.4 million across all of Shropshire (£8.2 Shropshire Council and		2015		The Connecting Shropshire aims to provide a minimum of 2 Mbps to all of Shropshire and as much superfast broadband as

Infrastructure or investment requirements and opportunities	Critical Priority or Key	Lead delivery partner	Other partners	Cost	Funding secured	Funding gap	Timescale for delivery	Potential funding sources	Notes
		be procured using the BDUK framework			£8.2 million from BDUK)				possible. The project will deliver to those communities that are not going to get either basic broadband or superfast broadband under the private sector rollout.
Social and community infrastructure									
Environment and climate change									
Transport and accessibility									

Stanton Lacy

Infrastructure or investment requirements and opportunities	Critical Priority or Key	Lead delivery partner	Other partners	Cost	Funding secured	Funding gap	Timescale for delivery	Potential funding sources	Notes
Housing and cohesive, sustainable communities									

Infrastructure or investment requirements and opportunities	Critical Priority or Key	Lead delivery partner	Other partners	Cost	Funding secured	Funding gap	Timescale for delivery	Potential funding sources	Notes
Economic investment and opportunity									
Facilitation of ICT /broadband technologies	KEY	Shropshire Council A private sector delivery partner will be procured using the BDUK framework	BDUK Town and Parish Councils		£16.4 million across all of Shropshire (£8.2 Shropshire Council and £8.2 million from BDUK)		2015		<p>The Connecting Shropshire aims to provide a minimum of 2 Mbps to all of Shropshire and as much superfast broadband as possible.</p> <p>The project will deliver to those communities that are not going to get either basic broadband or superfast broadband under the private sector rollout.</p>
Social and community infrastructure									
Environment and climate change									
Transport and accessibility									

Stoke St Milborough

Infrastructure or investment requirements and opportunities	Critical Priority or Key	Lead delivery partner	Other partners	Cost	Funding secured	Funding gap	Timescale for delivery	Potential funding sources	Notes
Housing and cohesive, sustainable communities									
Economic investment and opportunity									
Facilitation of ICT /broadband technologies	KEY	Shropshire Council A private sector delivery partner will be procured using the BDUK framework	BDUK Town and Parish Councils		£16.4 million across all of Shropshire (£8.2 Shropshire Council and £8.2 million from BDUK)		2015		<p>The Connecting Shropshire aims to provide a minimum of 2 Mbps to all of Shropshire and as much superfast broadband as possible.</p> <p>The project will deliver to those communities that are not going to get either basic broadband or superfast broadband under the private sector rollout.</p>
Social and community infrastructure									
Environment and climate change									
Transport and accessibility									

Whitton

Infrastructure or investment requirements and opportunities	Critical Priority or Key	Lead delivery partner	Other partners	Cost	Funding secured	Funding gap	Timescale for delivery	Potential funding sources	Notes
Housing and cohesive, sustainable communities									
Economic investment and opportunity									
Facilitation of ICT /broadband technologies	KEY	Shropshire Council A private sector delivery partner will be procured using the BDUK framework	BDUK Town and Parish Councils		£16.4 million across all of Shropshire (£8.2 Shropshire Council and £8.2 million from BDUK)		2015		<p>The Connecting Shropshire aims to provide a minimum of 2 Mbps to all of Shropshire and as much superfast broadband as possible.</p> <p>The project will deliver to those communities that are not going to get either basic broadband or superfast broadband under the private sector rollout.</p>
Social and community infrastructure									
Environment and climate change									
Transport and accessibility									

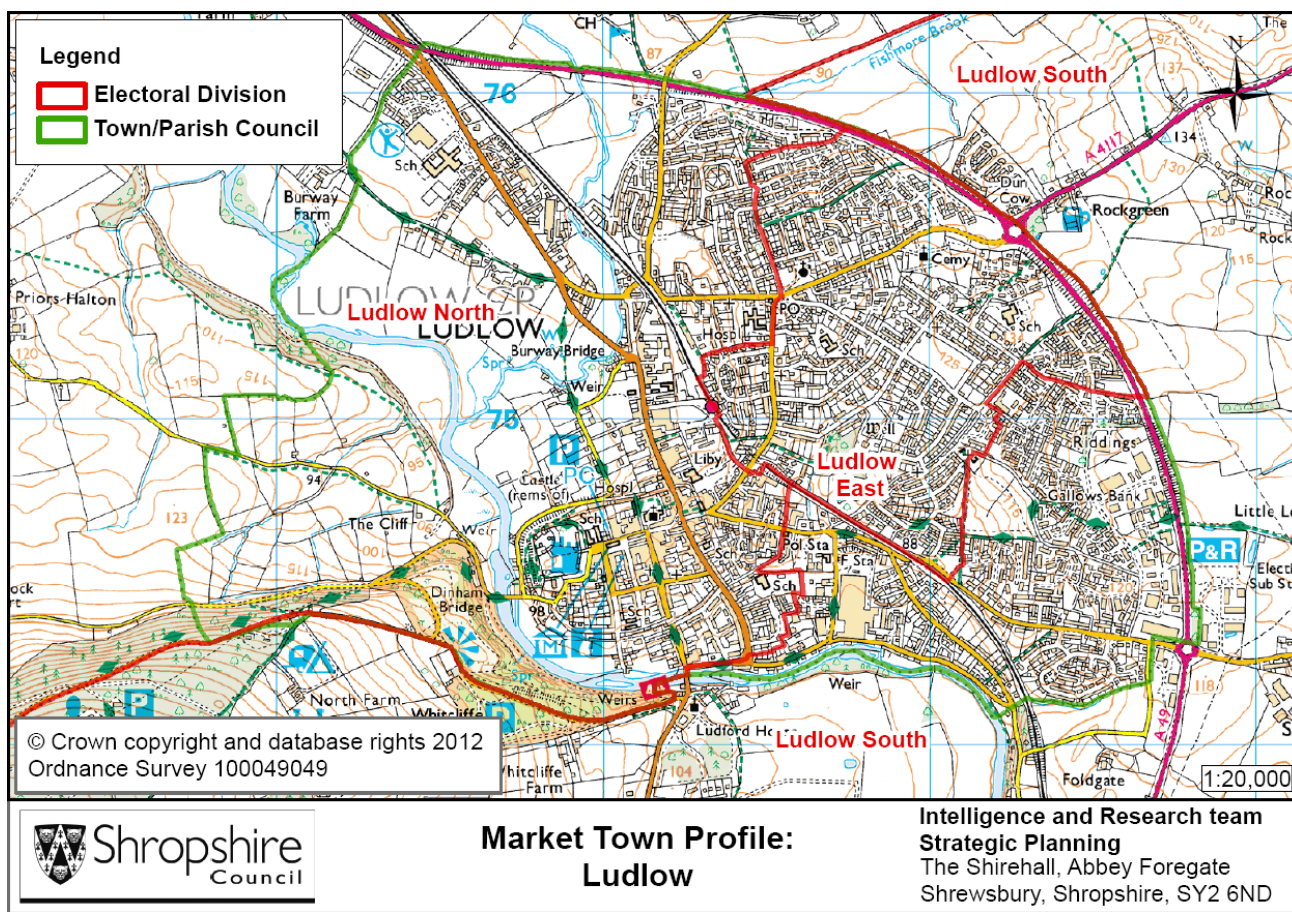
Infrastructure or investment requirements and opportunities	Critical Priority or Key	Lead delivery partner	Other partners	Cost	Funding secured	Funding gap	Timescale for delivery	Potential funding sources	Notes



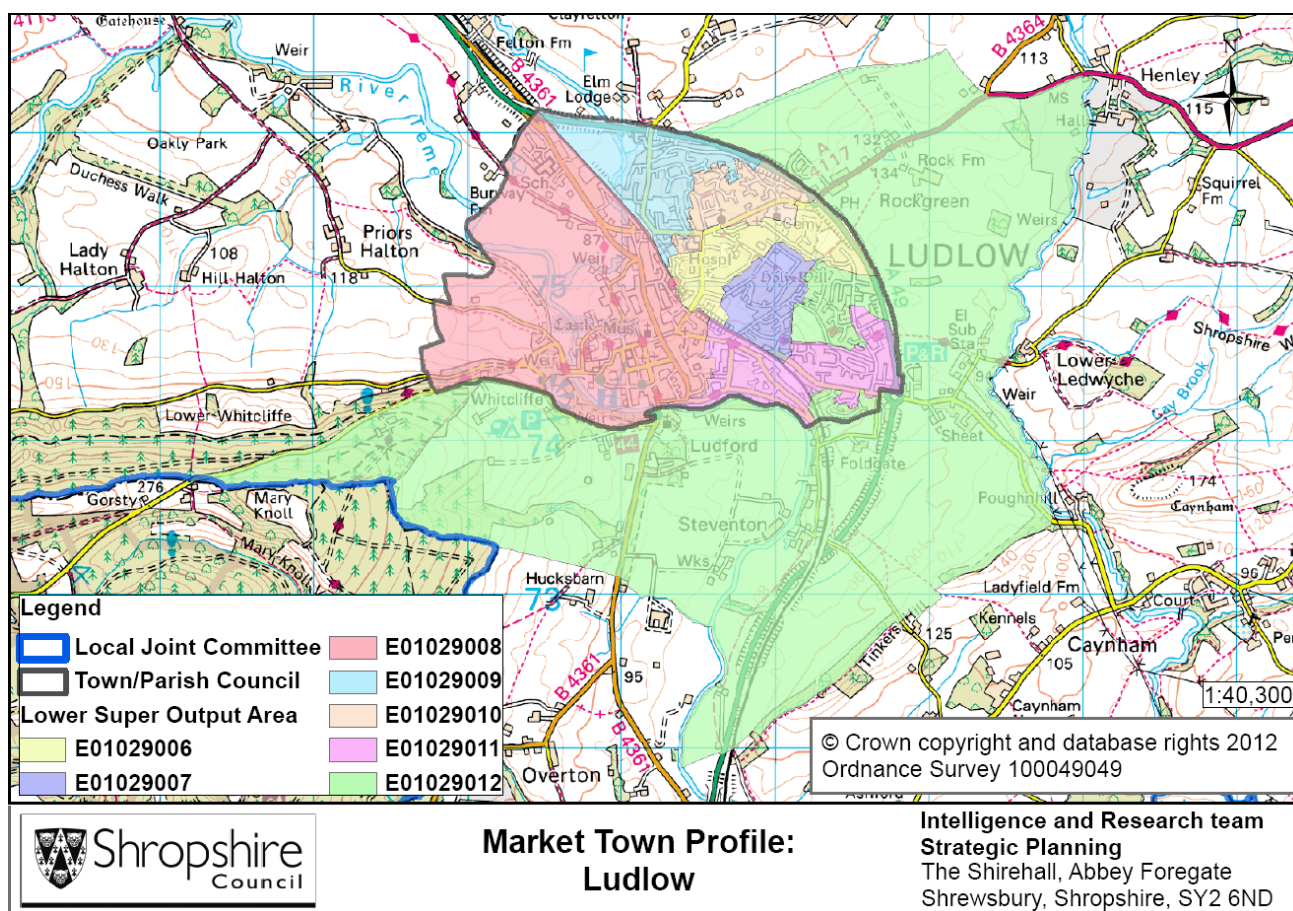
Appendix 1

Ludlow Market Town Profile: 2012

Context Map 1:



Context Map 2: Statistical Geographies



Social & Demographic Characteristics

Mid-2010 Population Estimates

	Males		Females		Total	
	No.	% Males	No.	% Females	No.	% Total
0-15	900	19	1,000	18	1,900	18
16-29	700	14	700	12	1,400	13
30-44	800	16	900	16	1,700	16
45-64	1,400	27	1,500	27	2,800	27
65+	1,200	24	1,600	29	2,800	27
Working age (16-64)	2,900	57	3,000	55	5,900	56
All ages	5,000	100	5,500	100	10,500	100

Source: Mid-2010 Population Estimates for Lower Layer Super Output Areas in England and Wales by Broad Age and Sex, Office for National Statistics, © Crown Copyright 2012.

Notes: Population estimates have been made by combining the statistics of LSOAs that cover the area. Estimates have been rounded to the nearest 100.

Business

- Ludlow supports a workforce of approximately 4,400 (BRES 2010, Office for National Statistics, © Crown Copyright 2012).
- Employment is split across a range of sectors, but retail and accommodation and food services account for a significant proportion of jobs (16.2% and 8.8% respectively). Ludlow's tourism industry undoubtedly influences the importance of these sectors.
- There is also a significant level of employment in financial and insurance (8.8% of total employment compared with 1.8% County-wide).
- In contrast, employment levels are comparatively low in manufacturing, construction and the public sector.

Breakdown of Employees by Sector 2010 (BRES, 2007 Standard Industrial Classification)

	Ludlow LSOAs % of Employees	Shropshire % of Employees
1 : Agriculture, forestry & fishing (A)	#	0.1
2 : Mining, quarrying & utilities (B,D and E)	#	1.2
3 : Manufacturing (C)	8.3	11.6
4 : Construction (F)	3.4	4.7
5 : Motor trades (Part G)	3.2	2.8
6 : Wholesale (Part G)	5.9	4.5
7 : Retail (Part G)	16.2	11.9
8 : Transport & storage (inc postal) (H)	2.7	4.1
9 : Accommodation & food services (I)	8.8	6.7
10 : Information & communication (J)	1.9	2.6
11 : Financial & insurance (K)	8.8	1.8
12 : Property (L)	#	1.0
13 : Professional, scientific & technical (M)	2.5	3.5
14 : Business administration & support services (N)	2.7	4.7
15 : Public administration & defence (O)	3.8	6.0
16 : Education (P)	7.5	10.1
17 : Health (Q)	15.1	17.5
18 : Arts, entertainment, recreation & other services (R,S,T and U)	6.9	5.1
Total (A-U)	100.0	100.0

Source: Business Register and Employment Survey 2010, Office for National Statistics, © Crown Copyright 2012.

Please note: Employees exclude voluntary workers, self-employed and working owners who are not paid via PAYE (Nomis, Office for National Statistics, © Crown Copyright 2012).

= figures have been subject to hard and soft suppression to avoid disclosure.

- There are approaching 700 businesses in Ludlow (Mint, 2012)
- While most are small, the town does accommodate some major employers, including:
 - Premier Medical
 - McConnel Ltd
 - South Shropshire Leisure Services
 - Biogen Greenfinch
 - Hendra Care Services

The Economy

JSA Claimant Trends for Ludlow (February 2012) compared to county, regional and national averages

	Number of Claimants (Feb 2012)	% change over previous month	% change over last quarter	% change over same month in 2011	As % of working age population
Ludlow	221	-1.8	5.7	0.5	3.8
Shropshire	5,350	2.92	9.77	6.55	3.0
West Midlands	175,134	1.20	6.45	6.91	5.1
Great Britain	1,623,211	2.29	8.26	9.84	4.1

Source: Claimant Count with Rates and Proportions, Office for National Statistics, © Crown Copyright 2012.

Note: The county, regional and national rates are the number of claimants as a percentage of the mid-2010 resident population aged 16-64.

Duration of unemployment in Ludlow compared to county, regional and national figures

	Less than 6 months		6-12 months		More than 12 months	
	No.	%	No.	%	No.	%
Ludlow	135	60.0	40	17.8	50	22.2
Shropshire	3,365	63.0	1,020	19.1	960	18.0
West Midlands	97,000	55.5	37,385	21.4	40,545	23.2
Great Britain	952,760	58.8	341,365	21.1	325,655	20.1

Source: Claimant Count – Age and Duration, February 2012, Office for National Statistics, © Crown Copyright 2012.

Age of unemployed in Ludlow compared to county, regional and national figures

	24 and under		25-49		50+	
	No.	%	No.	%	No.	%
Ludlow	60	27.9	120	55.8	35	16.3
Shropshire	1,670	31.2	2,755	51.5	925	17.3
West Midlands	54,945	31.4	94,065	53.8	25,930	14.8
Great Britain	489,070	30.2	879,840	54.3	250,865	15.5

Source: Claimant Count – Age and Duration, February 2012, Office for National Statistics, © Crown Copyright 2012.

Worklessness

Current DWP Benefit Claimants claiming out of work benefits (August 2011)

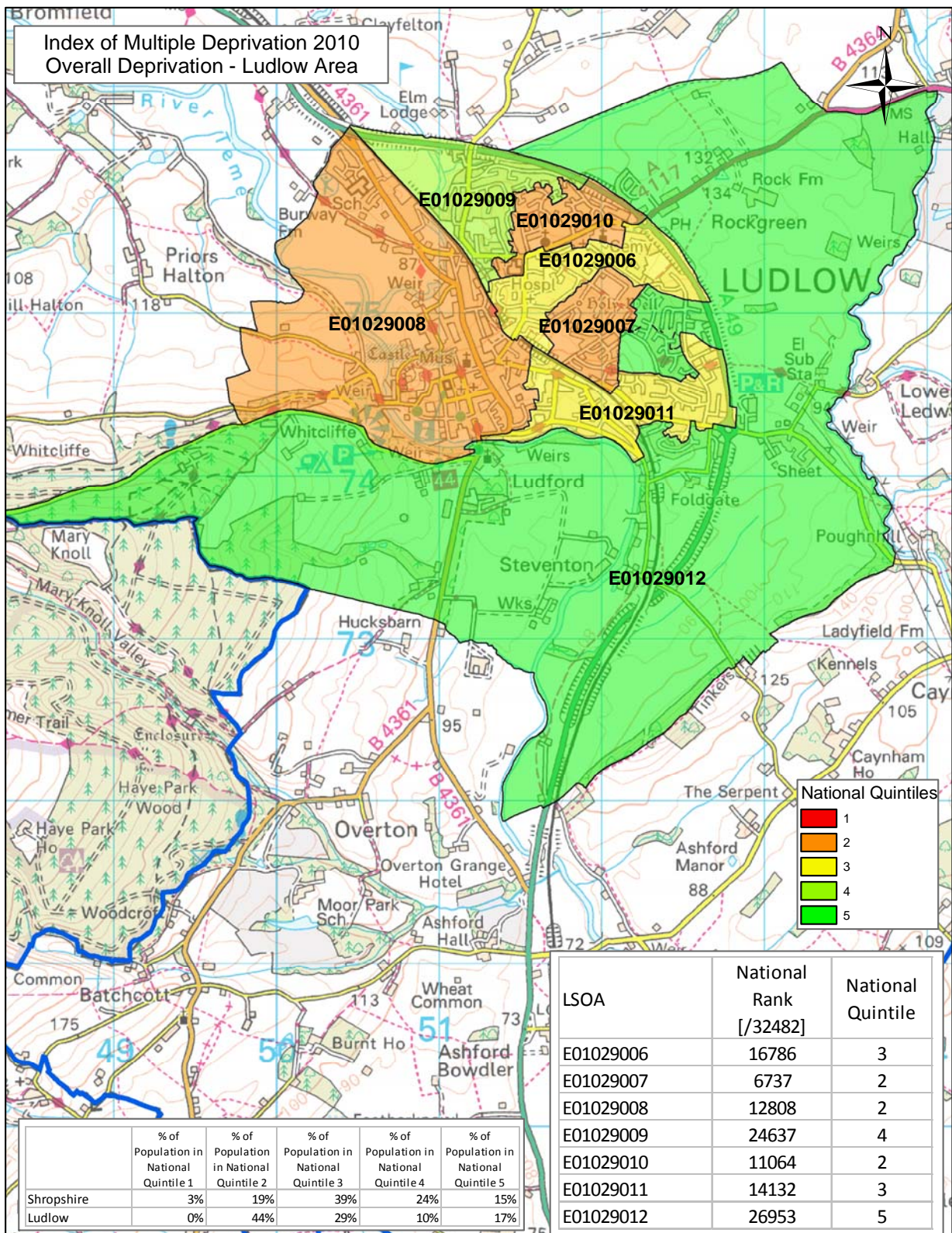
	Ludlow % (1)	Shropshire % (2)	West Midlands % (2)	Great Britain % (2)
Job Seekers	3.2	2.7	4.8	3.8
Incapacity benefit/ Severe Disablement Allowance	4.9			
Lone parents (Income Support Statistical Group)	1.4	0.9	1.7	1.5
Out of work benefits	12.2	9.1	13.8	12.3

Source of DWP Benefit Claimant Statistics: Office for National Statistics, © Crown Copyright 2012.

Rate (%) note: The rate is the number of claimants as a percentage of the total resident working age population (aged 16-64).

- (1) Source of population estimates (used for calculation of the Market Town rate): Mid-2010 Population Estimates for Lower Layer Super Output Areas in England and Wales by Broad Age and Sex, Office for National Statistics, © Crown Copyright 2012.
- (2) Source of population estimates (used for calculation of the County, Regional and National rates): Estimated Resident Population Mid-2010 by Single Year of Age and Sex, Office for National Statistics, © Crown Copyright 2012.

Deprivation



Shropshire
Council

Source: Indices of Deprivation 2010, Communities & Local Government
Note: The National Quintiles range from 1 being the most deprived to 5 being the least deprived.

© Crown copyright and database rights 2012
Ordnance Survey 100049049

**Research & Intelligence Team
Strategic Planning**

The Shirehall, Abbey Foregate,
Shrewsbury, Shropshire, SY2 6ND
Scale : 1:30,299

Housing and Households

Total number, type and size of dwellings/households in Ludlow Tenure

	Market Town		Shropshire
	No.	%	%
Total Households	4,355	100.0	100
No. of households who are:-			
Owner Occupiers	3,019	69.3	73
owns outright	1,665	38.2	35
owns with a mortgage or loan	1,307	30.0	37
shared ownership	47	1.1	1
Rent Privately	369	8.5	9
Rent from a local authority	55	1.3	10
Rent from housing association / registered social landlord	766	17.6	4
Rent from other, i.e. employer, friend, relative	146	3.4	4

Source: Table TE01 Tenure, 2001 Census, Office for National Statistics, © Crown Copyright 2012.

Type and Size

	Market Town		Shropshire
	No.	%	%
Total dwellings (household spaces)	4,617	100.0	100
Dwellings (household spaces) with residents	4,355	94.3	96
Vacant dwellings	194	4.2	3
Second residence / holiday accommodation	68	1.5	1
Detached	1,351	29.3	41
Semi-detached	1,288	27.9	34
Terraced	1,523	33.0	16
Purpose built block of flats or tenement	242	5.2	5
Flats, maisonettes or apartments in commercial buildings	99	2.1	1
Part of a converted or shared house (including bed-sits)	84	1.8	2
Caravan or other mobile or temporary structure	30	0.6	1
Unshared dwellings (household spaces)	4,533	98.2	98

Source: Table D01 Dwellings, 2001 Census, Office for National Statistics, © Crown Copyright 2012.

Ludlow House prices (Land Registry 2007-2009, rounded to the nearest whole number)

Figures in £	Average (Mean) Price Paid	Median Price Paid	Lower Quartile Price Paid	Upper Quartile Price Paid
2007	200,366	173,500	135,000	228,950
2008	190,633	158,498	125,000	214,000
2009	178,098	150,000	120,000	208,000

Source: Price Paid Data, Land Registry, © Crown Copyright 2012.

Monthly rental cost 2009 (Rightmove dataset, rounded to the nearest whole number)

Figures in £	Average (Mean) Rent Per Month	Median Rent Per Month	Lower Quartile Rent Per Month	Upper Quartile Rent Per Month
Ludlow	590	525	498	610

Source: © 2012 Rightmove.co.uk.

Ludlow Household income levels (Income X Dataset, rounded to the nearest whole number)

Figures in £	Average Income	Median Income	Lower Quartile Income	Upper Quartile Income
2009	25,414	23,025	15,782	33,558
2010	27,402	20,726	12,500	38,000

Source: Income X, © 2012 Acxiom Corporation.

Development Trends

Amount of dwellings built in Settlement from 2006-2011

	2006-2007	2007-2008	2008-2009	2009-2010	2010-2011	Total
Settlement Name	115	46	139	50	25	375

Source: Table 24, Development Trends Report: Shropshire Report 2006-2011, Shropshire Council 2012.

Number of outstanding permissions and allocations at April 2011

	Permissions	Allocations	Total
Settlement Name	227	0	227

Source: Table 37, Development Trends Report: Shropshire Report 2006-2011, Shropshire Council 2012.

Retail Development: amount of floorspace (sqm) completed – Classes A1 (shops), A2 (financial and professional services) & A3 (restaurants and cafes) and A4 (drinking establishments) & A5 (hot food takeaways) 2006-2011

	2006-2007	2007-2008	2008-2009	2009-2010	2010-2011	Total
Settlement Name	659	1236	1835	86	196	4012

Source: Table 43, Development Trends Report: Shropshire Report 2006-2011, Shropshire Council 2012.

Outstanding retail floorspace (sqm) as at April 2011

	Floorspace (sqm)
Settlement Name	262

Source: Table 46, Development Trends Report: Shropshire Report 2006-2011, Shropshire Council 2012.

Shops Survey

Types of shops surveyed in 2009

	Shops by Type		Gross Floorspace
	No.	%	%
Catering	38	13.9	10.6
Comparison	141	51.6	46.9
Convenience	27	9.9	24.2
Retail Services	17	6.2	2.2
Services	19	7.0	5.3
Vacant	31	11.4	10.8
Total	273	100.0	100.0

Source: Shops Survey 2009, Shropshire Council 2012.

Transport & Infrastructure

Journey to Work

	% of people aged 16-74 in employment	
	Urban Area	Shropshire
All People Aged 16-74 in Employment	100.0	100.0
People Who Work Mainly at or From Home	10.8	13.4
Underground; Metro; Light Rail; Tram	0.1	0.1
Train	1.0	0.8
Bus; Mini Bus or Coach	2.4	2.6
Motorcycle; Scooter; Moped	0.6	0.9
Driving a Car or Van	51.7	59.0
Passenger in a Car or Van	7.3	6.3
Taxi or Minicab	0.4	0.3
Bicycle	2.0	3.5
On Foot	23.5	12.6
Other	0.3	0.6
Public Transport	3.5	3.5
Motor Vehicle	60.0	66.5

Source: Table T01 Journey to Work, 2001 Census, Office for National Statistics, © Crown Copyright 2012.

Notes:

1. Includes Train, Underground; metro; light rail; tram, bus; Mini Bus or coach
2. Includes Motorcycle; Scooter; moped, Driving a car or van, Passenger in a car or van, Taxi or minicab

Car Ownership (Percentage of Total Households)

Percentage of cars or vans in Urban Area.	% of total households	
	Urban Area	Shropshire
All Households	100.0	100
No Car	26.9	17.7
One Car	48.7	44.3
Two Cars	20.2	29.4
Three Cars	3.4	6.5
Four or More Cars	0.7	2.1
All Cars and Vans in the Area	102.6	132.0

Source: Table C01 Cars or Vans, 2001 Census, Office for National Statistics, © Crown Copyright 2012.

Description of transport within Ludlow

- There is a railway station that is managed by Arriva Trains Wales; the station has direct trains to stations including Shrewsbury and Hereford.
- Two main roads connect Ludlow to other settlements: A49 and B4361.
- There are several cycle routes that pass through Ludlow, including Route 44 of the National Cycle Network.

Source: Shropshire Council GIS Layers, 2012; Arriva Trains Wales, © Copyright 2012

Natural and historic environment

Designation	Number	Sum of Area	Name
Conservation Areas	4		Ludlow (Steventon); Ludlow (Galdeford); Ludlow; Ludlow (Gravel Hill)
Public Rights of Way (ROW)		around 9.2 km	
Millennium Greens	2		Dinham Millennium Green; Gallows Bank Millennium Green
SSSIs	1		River Teme
Long Distance Routes	2		Shropshire Way; Mortimer Trail
Listed Buildings	422		Include The Reader's House, Churchyard, Castle Lodge and attached railings and The Butter Cross
Scheduled Monuments	4		Augustinian friary adjacent to the junction of Lower Galdeford and Weeping Cross Lane; St Julian's Well: a holy well in the middle of Livesey Road, 155m south west of the junction with Sandpits Road; Ludlow Town Walls and Ludlow Castle

Source: Shropshire Council GIS Layers.

Information about Market Town available online:

- Market Towns Toolkit Event Materials:
<http://www.shropshire.gov.uk/factsfigures.nsf/open/044FFE8C56302666802578A3004E26F3>
- Nomis Profiles (Labour Market statistics): <https://www.nomisweb.co.uk/>
- LocalView maps of Shropshire, showing population estimates and Index of Multiple Deprivation 2010:
<http://www.shropshire.gov.uk/factsfigures.nsf/open/F8C76E633C577BE8802570A0004CAB30>
- 2001 Census Profiles:
<http://www.shropshire.gov.uk/factsfigures.nsf/open/2ADEBD903F793BA980257479004995EE>
- Development Trends Report:
<http://www.shropshire.gov.uk/factsfigures.nsf/open/9E4117D110651F1E802574EA0033148B>
- Shops Survey Information Sheet:
<http://www.shropshire.gov.uk/factsfigures.nsf/open/C4EB69C9C7C8ECFD80256CC400419A97>